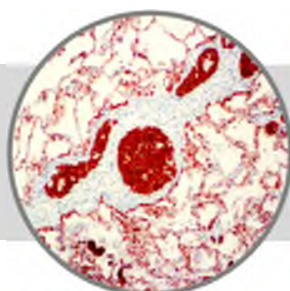


Cytokeratin 7 & CDX2, RMAb

Clone: EP16 & EP25**Rabbit Monoclonal**
Bio SB
 BIOSCIENCE FOR THE WORLD

www.biosb.com

Inset: IHC of Cytokeratin 7 & CDX2 on a FFPE Colon Carcinoma Metastasis to Lung Tissue

Intended Use

For In Vitro Diagnostic Use.

This antibody is intended for use in Immunohistochemical applications on formalin-fixed paraffin-embedded tissues (FFPE), frozen tissue sections and cell preparations. Interpretation of results should be performed by a qualified medical professional.

* The Cytokeratin 7 & CDX2 antibody cocktail, clones EP16 & EP25, has been manufactured using Epitomics RabMab® technology covered under Patent No.'s 5,675,063 and 7,402,409.

Immunogen

CK7: A synthetic peptide corresponding to residues near the N-terminus of human the CK7 protein.

CDX2: A synthetic peptide corresponding to residues near the C-terminus of human CDX-2 protein.

Summary and Explanation

Cytokeratin 7 (CK7) reacts with proteins that are found in most ductal, glandular and transitional epithelium of the urinary tract and bile duct epithelial cells. CK7 distinguishes between lung and breast epithelium that stain positive, and colon and prostate epithelial cells that are negative. CDX2 is a caudal-type homeobox gene that encodes an intestine-specific transcription factor expressed early in intestinal development and that may be involved in the regulation of proliferation and differentiation of intestinal epithelial cells.

The Cytokeratin 7 antibody has been shown to label the rete epithelium in the testis, epididymis epithelium, and the surface epithelium of the stomach and duodenum. Transitional-cell Carcinomas are positive and Prostate Cancers are negative. Anti-CDX2 antibody has been useful in distinguishing the gastrointestinal origin of Metastatic Adenocarcinomas and carcinoids. A high percentage of Mucinous Carcinomas of the Ovary also stain positively with this antibody, as well as Carcinomas from the upper gastrointestinal tract.

Antibody Type	Rabbit Monoclonal	Clone	EP16 & EP25
Isotype	IgG	Reactivity	Paraffin, Frozen
Localization	Cytoplasmic, Nuclear	Control	Colon, Breast, Ovary, Lung Carcinoma
Species Reactivity		Human	

Presentation

Anti-Cytokeratin 7 & CDX2 is a rabbit monoclonal antibody cocktail derived from cell culture supernatant that is concentrated, dialyzed, filter sterilized and diluted in buffer pH 7.5, containing BSA and sodium azide as a preservative.

Catalog No.	Antibody Type	Dilution	Volume/Qty
BSB 6653	Tinto Prediluted	Ready-to-Use	3.0 mL
BSB 6654	Tinto Prediluted	Ready-to-Use	7.0 mL
BSB 6655	Tinto Prediluted	Ready-to-Use	15.0 mL
BSB 6656	Concentrated	1:25 - 1:100	0.1 mL
BSB 6657	Concentrated	1:25 - 1:100	0.5 mL
BSB 6658	Concentrated	1:25 - 1:100	1.0 mL

Control Slides Available

Catalog No.	Quantity
BSB 6659	5 slides

Precautions

1. For professional users only. Results should be interpreted by a qualified medical professional.
2. This product contains <0.1% sodium azide (NaN₃) as a preservative. Ensure proper handling procedures are used with this reagent.
3. Always wear personal protective equipment such as laboratory coat, goggles and gloves when handling reagents.
4. Dispose of unused solution with copious amount of water.
5. Do not ingest reagent. If reagent is ingested, seek medical advice immediately.
6. Avoid contact with eyes. If contact occurs, flush with large quantities of water.
7. Follow safety precautions of the heating device used for epitope retrieval (TintoRetriever Pressure Cooker or similar).
8. For additional safety information refer to Safety Data Sheet for this product.
9. For complete recommendations for handling biological specimens, please refer to the CDC document, "Guidelines for Safe Work Practices in Human and Animal Medical Diagnostic Laboratories" (see References in this document).

Storage Store at 2-8°C (Control Slides: Store at 20-25°C)

Stability

This product is stable up to the expiration date on the product label. Do not use after expiration date listed on package label. Temperature fluctuations should be avoided. Store appropriately when not in use, and avoid prolonged exposure to room temperature conditions.

Specimen Preparation

Paraffin sections: The antibody can be used on formalin-fixed paraffin-embedded (FFPE) tissue sections. Ensure tissue undergoes appropriate fixation for best results. Pre-treatment of tissues with heat-induced epitope retrieval (HIER) is recommended using Bio SB ImmunoDNA Retriever with Citrate (BSB 0020-BSB 0023), ImmunoDNA Retriever with EDTA (BSB 0030-BSB 0033) or ImmunoDNA Digestor (BSB 0108-0112). See reverse side for complete protocol. Tissue should remain hydrated via use of Bio SB Immuno/DNA Washer solutions (BSB 0029 & BSB 0042).

Frozen sections and cell preparations: The antibody can be used for labeling acetone-fixed frozen sections and acetone-fixed cell preparations.

Staining Procedure

1. Cut and mount 3-5 micron formalin-fixed paraffin-embedded tissues on positively charged slides such as Bio SB Hydrophilic Plus Slides (BSB 7028).
2. Air dry for 2 hours at 58° C.
3. Deparaffinize, dehydrate and rehydrate tissues.
4. Subject tissues to heat induced epitope retrieval (HIER) using a suitable retrieval solution such as ImmunoDNA Retriever with Citrate (BSB 0020-BSB 0023) or EDTA (BSB 0030-BSB 0033).
5. Any of three heating methods may be used:

a. TintoRetriever Pressure Cooker or Equivalent

Place tissues/slides in a staining dish or coplin jar containing the ImmunoDNA Retriever with Citrate or EDTA, and place on trivet in the pressure cooker. Add 1-2 inches of distilled water to the pressure cooker and turn heat to high. Incubate for 15 minutes. Open and immediately transfer slides to room temperature.

b. TintoRetriever PT Module or Water Bath Method

Place tissues/slides in a pre-warmed staining dish or coplin jar containing the ImmunoDNA Retriever with Citrate or EDTA at 95°-99° C. Incubate for 30-60 minutes.

c. Conventional Steamer Method

Place tissues/slides in a pre-warmed staining dish or coplin jar containing the ImmunoDNA Retriever with Citrate or EDTA in a steamer, cover and steam for 30-60 minutes.

6. After heat treatment, transfer slides in ImmunoDNA Retriever with Citrate or EDTA to room temperature and let stand for 15-20 minutes.
7. For manual staining, perform antibody incubation at ambient temperature. For automated staining methods, perform antibody incubation according to instrument manufacturer's instructions.
8. Wash slides with ImmunoDNA washer or DI water.
9. Continue IHC staining protocol. Wash slides between each step with ImmunoDNA washer solution.

Product Limitations

Due to inherent variability present in immunohistochemical procedures (including fixation time of tissues, dilution factor of antibody, retrieval method utilized and incubation time), optimal performance should be established through the use of positive and negative controls. Results should be interpreted by a qualified medical professional.

Abbreviated Immunohistochemical Protocol

Step	ImmunoDetector AP/HRP	PolyDetector AP/HRP	PolyDetector Plus HRP
Peroxidase/AP Blocker	5 min.	5 min.	5 min
Primary Antibody	30-60 min.	30-60 min.	30-60 min.
1st Step Detection	10 min.	30-45 min.	15 min.
2nd Step Detection	10 min.	Not Applicable	15 min.
Substrate-Chromogen	5-10 min.	5-10 min.	5-10 min.
Counterstain / Coverslip	Varies	Varies	Varies


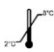






Mounting Protocols

For detailed instructions using biodegradable permanent mounting media such as XyGreen PermaMunter (BSB 0169-0174) or organic solvent based resin such as PermaMunter (BSB 0094-0097), refer to PI0174 or PI0097.

References

1. Van de Molengraft FJJM, et al. *Histopathology*. 1993;22:35-38
2. Van Niekerk CC, et al. *Am J Pathology*. 1991;138:455-463
3. Levine PH, et al. *Diagn Cytopathology*. 2006;Mar;34(3):191-5
4. Mazziotta RM, et al. *App Immunohistochem Mol Morphol*. 2005;Mar;13(1):55-60
5. Saqi A, et al. *Am J Clin Pathol*. 2005;Mar;123(3):394-404
6. U.S. Department of Health and Human Services: Centers for Disease Control and Prevention. *Guidelines for Safe Work Practices in Human and Animal Medical Diagnostic Laboratories*. Supplement / Vol. 61, January 6, 2012.

Symbol Key / Légende des symboles/Erläuterung der Symbole

	EMERGO EUROPE Prinsessegracht 20 2514 AP The Hague The Netherlands		Storage Temperature Limites de température Zulässiger Temperaturbereich		Manufacturer Fabricant Hersteller		Catalog Number Référence du catalogue Bestellnummer
	In Vitro Diagnostic Medical Device Dispositif médical de diagnostic in vitro In-Vitro-Diagnostikum		Read Instructions for Use Consulter les instructions d'utilisation Gebrauchsanweisung beachten		Expiration Date Utiliser jusque Verwendbar bis		Lot Number Code du lot Chargenbezeichnung



69 Santa Felicia Dr., Santa Barbara, CA 93117, USA
Tel. (805) 692-2768 | Tel. (800) 561-1145 | Fax. (805) 692-2769
E-mail: sales@biosb.com | Website: www.biosb.com