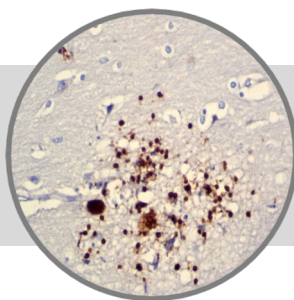


Toxoplasma gondii

Clone: Polyclonal
Rabbit Polyclonal



ASR

Bio SB
BIOSCIENCE FOR THE WORLD
www.biosb.com

Inset: IHC of Toxoplasma gondii on FFPE Brain Tissue

Intended Use

Analyte Specific Reagent.

Analytical and performance characteristics for Toxoplasma gondii polyclonal antibody are not established.

Immunogen

Toxoplasma gondii.

Summary and Explanation

Toxoplasma gondii is a genus of parasitic protozoa (cats being the definitive host). It can also be carried by the vast majority of warm-blooded animals, including humans. Toxoplasma gondii belongs to the phylum Apicomplexa and is the only known member species of the genus Toxoplasma. The life cycle of T. gondii has two phases. The sexual part of the life cycle (coccidia-like) occurs only in members of the Felidae family (domestic and wild cats), which makes these animals the parasite's primary host. The asexual part of the life cycle can occur in any warm-blooded animal, such as other mammals (including felines) and birds.

| Antibody Type | Rabbit Polyclonal | Clone | Polyclonal |
|--------------------|-------------------|------------|--------------------------------------|
| Isotype | IgG | Reactivity | Paraffin, Frozen |
| Localization | Cell Wall | Control | Toxoplasma gondii Infected Tissue |
| Species Reactivity | | Human | |

Precautions

1. For professional users only. Results should be interpreted by a qualified medical professional.
2. This product contains <0.1% sodium azide (NaN₃) as a preservative. Ensure proper handling procedures are used with this reagent.
3. Always wear personal protective equipment such as laboratory coat, goggles and gloves when handling reagents.
4. Dispose of unused solution with copious amount of water.
5. Do not ingest reagent. If reagent is ingested, seek medical advice immediately.
6. Avoid contact with eyes. If contact occurs, flush with large quantities of water.
7. Follow safety precautions of the heating device used for epitope retrieval (TintoRetriever Pressure Cooker or similar).
8. For additional safety information refer to Safety Data Sheet for this product.
9. For complete recommendations for handling biological specimens, please refer to the CDC document, "Guidelines for Safe Work Practices in Human and Animal Medical Diagnostic Laboratories" (see References in this document).

Presentation

Anti-Toxoplasma is a purified immunoglobulin fraction of rabbit antiserum that is filter sterilized and diluted in buffer pH 7.5, containing BSA and sodium azide as a preservative.

| Catalog No. | Antibody Type | Dilution | Volume/Qty |
|-------------|------------------|--------------|------------|
| BSB 6043 | Tinto Prediluted | Ready-to-Use | 3.0 mL |
| BSB 6044 | Tinto Prediluted | Ready-to-Use | 7.0 mL |
| BSB 6045 | Tinto Prediluted | Ready-to-Use | 15.0 mL |
| BSB 6046 | Concentrated | 1:50 - 1:200 | 0.1 mL |
| BSB 6047 | Concentrated | 1:50 - 1:200 | 0.5 mL |
| BSB 6048 | Concentrated | 1:50 - 1:200 | 1.0 mL |

Control Slides Available

| Catalog No. | Quantity |
|-------------|----------|
| BSB 6049 | 5 slides |

Storage

Store at 2-8°C

Stability

This product is stable up to the expiration date on the product label. Do not use after expiration date listed on package label. Temperature fluctuations should be avoided. Store appropriately when not in use, and avoid prolonged exposure to room temperature conditions.

Specimen Preparation

Paraffin sections: The antibody can be used on formalin-fixed paraffin-embedded (FFPE) tissue sections. Ensure tissue undergoes appropriate fixation for best results. Pre-treatment of tissues with heat-induced epitope retrieval (HIER) is recommended using Bio SB ImmunoDNA Retriever with Citrate (BSB 0020-BSB 0023), ImmunoDNA Retriever with EDTA (BSB 0030-BSB 0033) or ImmunoDNA Digestor (BSB 0108-0112). See reverse side for complete protocol. Tissue should remain hydrated via use of Bio SB Immuno/DNA Washer solutions (BSB 0029 & BSB 0042).

Frozen sections and cell preparations: The antibody can be used for labeling acetone-fixed frozen sections and acetone-fixed cell preparations.

This Antibody has been quality control tested by immunohistochemistry as follows

Quality Control Procedure

| Step | ImmunoDetector AP/HRP | PolyDetector AP/HRP | PolyDetector Plus HRP |
|--------------------------|-----------------------|---------------------|-----------------------|
| Peroxidase/AP Blocker | 5 min. | 5 min. | 5 min. |
| Primary Antibody | 30-60 min. | 30-60 min. | 30-60 min. |
| 1st Step Detection | 10 min. | 30-45 min. | 15 min. |
| 2nd Step Detection | 10 min. | Not Applicable | 15 min. |
| Substrate-Chromogen | 5-10 min. | 5-10 min. | 5-10 min. |
| Counterstain / Coverslip | Varies | Varies | Varies |

References

1. Dubey JP, Lindsay DS, Speer CA, Clin Microbiol. 1998; Rev11(2):267-29
2. Berdoy M, Webster J, Macdonald D, Proceedings of the Royal Society of London. 2000; B267:1591-1594
3. E. Fuller Torrey and Robert H. Yolken, Toxoplasma gondii and Schizophrenia, Emerging Infectious Diseases. 2003; November
4. U.S. Department of Health and Human Services: Centers for Disease Control and Prevention. Guidelines for Safe Work Practices in Human and Animal Medical Diagnostic Laboratories. Supplement / Vol. 61, January 6, 2012.

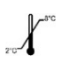



Mounting Protocols

For detailed instructions using biodegradable permanent mounting media such as XyGreen PermaMunter (BSB 0169-0174) or organic solvent based resin such as PermaMunter (BSB 0094-0097), refer to PI0174 or PI0097.

Product Limitations

Due to inherent variability present in immunohistochemical procedures (including fixation time of tissues, dilution factor of antibody, retrieval method utilized and incubation time), optimal performance should be established through the use of positive and negative controls. Results should be interpreted by a qualified medical professional.

Symbol Key / Légende des symboles/Erläuterung der Symbole

| | | | | | |
|---|--|---|---|------------|---|
|  | Storage Temperature Limites de température Zulässiger Temperaturbereich |  | Manufacturer Fabricant Hersteller | REF | Catalog Number Référence du catalogue Bestellnummer |
|  | Read Instructions for Use Consulter les instructions d'utilisation Gebrauchsanweisung beachten |  | Expiration Date Utiliser jusqu'à Verwendbar bis | LOT | Lot Number Code du lot Chargenbezeichnung |

Bio SB
BIOSCIENCE FOR THE WORLD



69 Santa Felicia Dr., Santa Barbara, CA 93117, USA
Tel. (805) 692-2768 | Tel. (800) 561-1145 | Fax. (805) 692-2769
E-mail: sales@biosb.com | Website: www.biosb.com