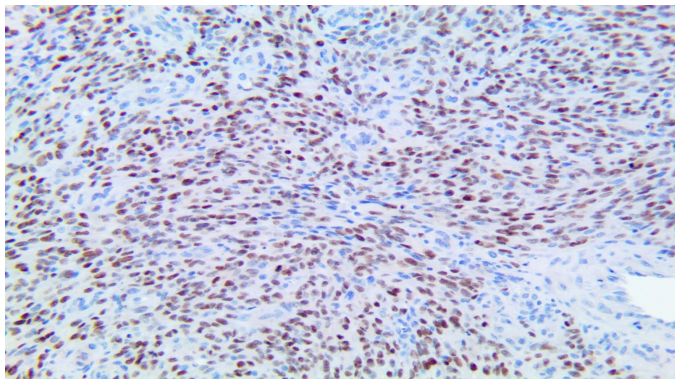


HHV-8

Clone: RBT-HHV8
Rabbit Monoclonal

ASR



Inset: IHC of HHV-8 on a FFPE Kaposi's Sarcoma Tissue

Intended Use

Analyte Specific Reagent.
Analytical and performance characteristics for HHV-8 antibody, clone RBT-HHV8, are not established.

Immunogen

Recombinant protein corresponding to the latent nuclear antigen 1 molecule of HHV8

Summary and Explanation

Kaposi's sarcoma-associated herpesvirus is the eighth human herpes virus; its formal name according to the International Committee on Taxonomy of Viruses is HHV-8. It causes development of cutaneous lesions such as macules, plaques, and nodules, and may invade tissues such as lymph nodes.

It is associated with Kaposi's sarcoma (KS), primary effusion lymphoma, and multicentric Castlemans disease. HHV-8 detects the latent nuclear antigen (LNA) protein in all stages and pathological presentations of KS, which can differentiate KS from HIV-induced tumors or other neoplasia of similar morphology. Immunohistochemical detection of HHV-8 LNA is particularly useful in early detection, where inflammation but not significant tumor formation has occurred.

Antibody Type	Rabbit Monoclonal	Clone	RBT-HHV8
Isotype	IgG	Reactivity	Paraffin, Frozen
Localization	Nuclear	Control	Kaposi's Sarcoma
Species Reactivity		Human	

Presentation

Anti-HHV-8 is a Rabbit Monoclonal antibody derived from cell culture supernatant that is concentrated, dialyzed, filter sterilized and diluted in buffer pH 7.5, containing BSA and sodium azide as a preservative.

<i>Catalog No.</i>	<i>Presentation</i>	<i>Dilution</i>	<i>Volume/Qty</i>
BSB-3778-3-ASR	Predilute	Ready-to-Use	3.0 mL
BSB-3778-7-ASR	Predilute	Ready-to-Use	7.0 mL
BSB-3778-15-ASR	Predilute	Ready-to-Use	15.0 mL
BSB-3778-01-ASR	Concentrate	1:50-1:200	0.1 mL
BSB-3778-05-ASR	Concentrate	1:50-1:200	0.5 mL
BSB-3778-1-ASR	Concentrate	1:50-1:200	1.0 mL

Control Slides Available

<i>Catalog No.</i>	<i>Quantity</i>
BSB-3778-CS	5 slides

Storage Store at 2-8°C (Control Slides: Store at 20-25°C)

Precautions

1. For professional users only. Results should be interpreted by a qualified medical professional.
2. This product contains <0.1% sodium azide (NaN₃) as a preservative. Ensure proper handling procedures are used with this reagent.
3. Always wear personal protective equipment such as a laboratory coat, goggles, and gloves when handling reagents.
4. Dispose of unused solution with copious amounts of water.
5. Do not ingest reagent. If reagent is ingested, seek medical advice immediately.
6. Avoid contact with eyes. If contact occurs, flush with large quantities of water.
7. Follow safety precautions of the heating device used for epitope retrieval (TintoRetriever Pressure Cooker or similar).
8. For additional safety information refer to Safety Data Sheet for this product.
9. For complete recommendations for handling biological specimens, please refer to the CDC document, "Guidelines for Safe Work Practices in Human and Animal Medical Diagnostic Laboratories" (see References in this document).

Stability

This product is stable up to the expiration date on the product label.

Do not use after expiration date listed on package label. Temperature fluctuations should be avoided. Store appropriately when not in use, and avoid prolonged exposure to room temperature conditions.

Specimen Preparation

Paraffin sections: The antibody can be used on formalin-fixed paraffin-embedded (FFPE) tissue sections. Ensure tissue undergoes appropriate fixation for best results. Pre-treatment of tissues with heat-induced epitope retrieval (HIER) is recommended using Bio SB ImmunoDNA Retriever with Citrate (BSB 0020-BSB 0023), ImmunoDNA Retriever with EDTA (BSB 0030-BSB 0033), or ImmunoDNA Digestor (BSB 0108-0112). See reverse side for complete protocol. Tissue should remain hydrated via use of Bio SB Immuno/DNA Washer solutions (BSB 0029 & BSB 0042).

Frozen sections and cell preparations: The antibody can be used on acetone-fixed frozen sections and acetone-fixed cell preparations.

This Antibody has been quality control tested by immunohistochemistry as follows

Abbreviated Immunohistochemical Protocol

Step	ImmunoDetector AP/HRP	PolyDetector AP/HRP	PolyDetector Plus HRP
Peroxidase/AP Blocker	5 min.	5 min.	5 min
Primary Antibody	30-60 min.	30-60 min.	30-60 min.
1st Step Detection	10 min.	30-45 min.	15 min.
2nd Step Detection	10 min.	Not Applicable	15 min.
Substrate- Chromogen	5-10 min.	5-10 min.	5-10 min.
Counterstain / Coverslip	Varies	Varies	Varies

Mounting Protocols

For detailed instructions using biodegradable permanent mounting media such as XyGreen PermaMunter (BSB 0169-0174) or organic solvent based resin such as PermaMunter (BSB 0094-0097), refer to PI0174 or PI0097.






Product Limitations

Due to inherent variability present in immunohistochemical procedures (including fixation time of tissues, dilution factor of antibody, retrieval method utilized, and incubation time), optimal performance should be established through the use of positive and negative controls. Results should be interpreted by a qualified medical professional.

References

1. Corbellino M, Poirel L, Bestetti G, et al. Restricted tissue distribution of extralésional Kaposi's sarcoma-associated herpesvirus-like DNA sequences in AIDS patients with Kaposi's sarcoma. *AIDS Res Hum Retroviruses*. 1996;12(8):651-657. doi:10.1089/aid.1996.12.651
2. Katano H, Suda T, Morishita Y, et al. Human herpesvirus 8-associated solid lymphomas that occur in AIDS patients take anaplastic large cell morphology. *Mod Pathol*. 2000;13(1):77-85. doi:10.1038/modpathol.3880012
3. Kaaya E, Castaños-Vélez E, Heiden T, et al. Proliferation and apoptosis in the evolution of endemic and acquired immunodeficiency syndrome-related Kaposi's sarcoma. *Med Oncol*. 2000;17(4):325-332. doi:10.1007/BF02782199
4. Katano H, Sato Y, Itoh H, Sata T. Expression of human herpesvirus 8 (HHV-8)-encoded immediate early protein, open reading frame 50, in HHV-8-associated diseases. *J Hum Virol*. 2001;4(2):96-102.
5. Komatsu T, Barbera AJ, Ballestas ME, Kaye KM. The Kaposi's sarcoma-associated herpesvirus latency-associated nuclear antigen. *Viral Immunol*. 2001;14(4):311-317. doi:10.1089/08828240152716565
6. Ryan P, Aarons S, Murray D, et al. Human herpesvirus 8 (HHV-8) detected in two patients with Kaposi's sarcoma-like pyogenic granuloma. *J Clin Pathol*. 2002;55(8):619-622. doi:10.1136/jcp.55.8.619
7. Pereira PF, Cuzzi T, Galhardo MC. Immunohistochemical detection of the latent nuclear antigen-1 of the human herpesvirus type 8 to differentiate cutaneous epidemic Kaposi sarcoma and its histological simulators. *An Bras Dermatol*. 2013;88(2):243-246. doi:10.1590/S0365-05962013000200010
8. U.S. Department of Health and Human Services: Centers for Disease Control and Prevention. Guidelines for Safe Work Practices in Human and Animal Medical Diagnostic Laboratories. Supplement / Vol. 61, January 6, 2012. <https://www.cdc.gov/mmwr/pdf/other/su6101.pdf>

Symbol Key / Légende des symboles/Erläuterung der Symbole

 Storage Temperature Limites de température Zulässiger Temperaturbereich	Manufacturer Fabricant Hersteller	 REF	Catalog Number Référence du catalogue Bestellnummer
 Read Instructions for Use Consulter les instructions d'utilisation Gebrauchsanweisung beachten	 Expiration Date Utiliser jusque Verwendbar bis	 LOT	Lot Number Code du lot Chargenbezeichnung



5385 Hollister Avenue, Bldg. 8, Ste. 108 Santa Barbara, CA 93111, USA
Tel. (805) 692-2768 | Tel. (800) 561-1145 | Fax. (805) 692-2769
E-mail: sales@biosb.com | Website: www.biosb.com