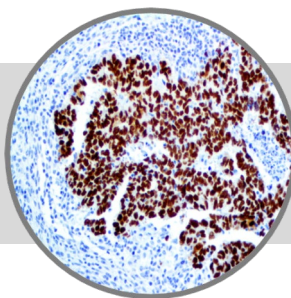


SALL4, RMaB

Clone: EP299

Rabbit Monoclonal


Bio SB
 BIOSCIENCE FOR THE WORLD
 

www.biosb.com

Inset: IHC of SALL4 on a FFPE Testicular Cancer Tissue

Intended Use

For In Vitro Diagnostic Use.

This antibody is intended for use in Immunohistochemical applications on formalin-fixed paraffin-embedded tissues (FFPE), frozen tissue sections and cell preparations. Interpretation of results should be performed by a qualified medical professional.

* The SALL4 antibody, clone EP299, has been manufactured using Epitomics RabMaB® technology covered under Patent No.'s 5,675,063 and 7,402,409.

Immunogen

A synthetic peptide corresponding to residues of human SALL4 protein.

Summary and Explanation

Spalt-like protein 4 (SALL4) is a transcription factor encoded by a member of the Spalt-like (SALL) gene family, SALL4. There are four human SALL proteins (SALL1, 2, 3, and 4) with structural homology and playing diverse roles in embryonic development, kidney function, and cancer. SALL4 expression is low to undetectable in most adult tissues with the exception of germ cells and human blood progenitor cells. In normal testicular tissue, positive, weak SALL4 staining is observed in spermatogonia. In addition, a few (<5%) primary spermatocytes show dot-like weak SALL4 staining. Secondary spermatocytes, spermatids, spermatozoa, and Sertoli cells are negative for anti-SALL4. Leydig cells, rete testis, epididymis, spermatid cord fibroblasts, blood vessels, and hematopoietic cells are negative for SALL4.

SALL4 is reactivated and misregulated in various cancer, such as acute myeloid leukemia (AML), B-cell acute lymphocytic leukemia (B-ALL), germ cell tumors, gastric cancer, breast cancer, hepatocellular carcinoma (HCC), lung cancer, and glioma. In many of these cancers, SALL4 expression has been compared in tumor cells to the normal tissue counterpart, e.g. it is expressed in nearly half of primary human endometrial cancer samples, but not in normal or hyperplastic endometrial tissue samples. Often, SALL4 expression is correlated with worse survival and poor prognosis such as in HCC, or with metastasis such as in endometrial cancer, colorectal carcinoma, and esophageal squamous cell carcinoma. It is unclear how SALL4 expression is deregulated in malignant cells, but DNA hypomethylation in its intron 1 region has been observed in B-ALL. In solid tumors such as germ cell tumors, SALL4 protein expression has become a standard diagnostic biomarker. SALL4 demonstrates 100% sensitivity and stains more than 90% tumor cells in all intratubular germ cell neoplasia, seminomas, dysgerminomas, embryonal carcinomas, and yolk sac tumor (both pediatric and postpubertal). SALL4 is also positive in most cases of teratoma and the mononucleated trophoblastic cells in choriocarcinomas. Most non-testicular tumors from various organs and sites are negative for SALL4, though an occasional carcinoma or sarcoma may show weak SALL4 staining in less than 25% of tumor cells.

Antibody Type	Rabbit Monoclonal	Clone	EP299
Isotype	IgG1/K	Reactivity	Paraffin, Frozen
Localization	Nuclear	Control	Testis, Seminoma, Yolk Sac Tumor
Species Reactivity		Human	

Presentation

SALL4 is a rabbit monoclonal antibody derived from cell culture supernatant that is concentrated, dialyzed, filter sterilized and diluted in buffer pH 7.5, containing BSA and sodium azide as a preservative.

<i>Catalog No.</i>	<i>Antibody Type</i>	<i>Dilution</i>	<i>Volume/Qty</i>
BSB 3190	Tinto Prediluted	Ready-to-Use	3.0 mL
BSB 3191	Tinto Prediluted	Ready-to-Use	7.0 mL
BSB 3192	Tinto Prediluted	Ready-to-Use	15.0 mL
BSB 3193	Concentrated	1:10 - 1:50	0.1 mL
BSB 3194	Concentrated	1:10 - 1:50	0.5 mL
BSB 3195	Concentrated	1:10 - 1:50	1.0 mL

Control Slides Available

<i>Catalog No.</i>	<i>Quantity</i>
BSB 3196	5 slides

Precautions

1. For professional users only. Results should be interpreted by a qualified medical professional.
2. This product contains <0.1% sodium azide (NaN₃) as a preservative. Ensure proper handling procedures are used with this reagent.
3. Always wear personal protective equipment such as laboratory coat, goggles and gloves when handling reagents.
4. Dispose of unused solution with copious amount of water.
5. Do not ingest reagent. If reagent is ingested, seek medical advice immediately.
6. Avoid contact with eyes. If contact occurs, flush with large quantities of water.
7. Follow safety precautions of the heating device used for epitope retrieval (TintoRetriever Pressure Cooker or similar).
8. For additional safety information refer to Safety Data Sheet for this product.
9. For complete recommendations for handling biological specimens, please refer to the CDC document, "Guidelines for Safe Work Practices in Human and Animal Medical Diagnostic Laboratories" (see References in this document).

Storage Store at 2-8°C (Control Slides: Store at 20-25°C)

Stability

This product is stable up to the expiration date on the product label. Do not use after expiration date listed on package label. Temperature fluctuations should be avoided. Store appropriately when not in use, and avoid prolonged exposure to room temperature conditions.

Specimen Preparation

Paraffin sections: The antibody can be used on formalin-fixed paraffin-embedded (FFPE) tissue sections. Ensure tissue undergoes appropriate fixation for best results. Pre-treatment of tissues with heat-induced epitope retrieval (HIER) is recommended using Bio SB ImmunoDNA Retriever with Citrate (BSB 0020-BSB 0023), ImmunoDNA Retriever with EDTA (BSB 0030-BSB 0033) or ImmunoDNA Digestor (BSB 0108-0112). See reverse side for complete protocol. Tissue should remain hydrated via use of Bio SB Immuno/DNA Washer solutions (BSB 0029 & BSB 0042).

Frozen sections and cell preparations: The antibody can be used for labeling acetone-fixed frozen sections and acetone-fixed cell preparations.

Staining Procedure

1. Cut and mount 3-5 micron formalin-fixed paraffin-embedded tissues on positively charged slides such as Bio SB Hydrophilic Plus Slides (BSB 7028).
2. Air dry for 2 hours at 58° C.
3. Deparaffinize, dehydrate and rehydrate tissues.
4. Subject tissues to heat induced epitope retrieval (HIER) using a suitable retrieval solution such as ImmunoDNA Retriever with Citrate (BSB 0020-BSB 0023) or EDTA (BSB 0030-BSB 0033).
5. Any of three heating methods may be used:

a. TintoRetriever Pressure Cooker or Equivalent

Place tissues/slides in a staining dish or coplin jar containing the ImmunoDNA Retriever with Citrate or EDTA, and place on trivet in the pressure cooker. Add 1-2 inches of distilled water to the pressure cooker and turn heat to high. Incubate for 15 minutes. Open and immediately transfer slides to room temperature.

b. TintoRetriever PT Module or Water Bath Method

Place tissues/slides in a pre-warmed staining dish or coplin jar containing the ImmunoDNA Retriever with Citrate or EDTA at 95°-99° C. Incubate for 30-60 minutes.

c. Conventional Steamer Method

Place tissues/slides in a pre-warmed staining dish or coplin jar containing the ImmunoDNA Retriever with Citrate or EDTA in a steamer, cover and steam for 30-60 minutes.

6. After heat treatment, transfer slides in ImmunoDNA Retriever with Citrate or EDTA to room temperature and let stand for 15-20 minutes.
7. For manual staining, perform antibody incubation at ambient temperature. For automated staining methods, perform antibody incubation according to instrument manufacturer's instructions.
8. Wash slides with ImmunoDNA washer or DI water.
9. Continue IHC staining protocol. Wash slides between each step with ImmunoDNA washer solution.

Mounting Protocols

For detailed instructions using biodegradable permanent mounting media such as XyGreen PermaMunter (BSB 0169-0174) or organic solvent based resin such as PermaMunter (BSB 0094-0097), refer to PI0174 or PI0097.

Abbreviated Immunohistochemical Protocol

Step	ImmunoDetector AP/HRP	PolyDetector AP/HRP	PolyDetector Plus HRP
Peroxidase/AP Blocker	5 min.	5 min.	5 min
Primary Antibody	30-60 min.	30-60 min.	30-60 min.
1st Step Detection	10 min.	30-45 min.	15 min.
2nd Step Detection	10 min.	Not Applicable	15 min.
Substrate-Chromogen	5-10 min.	5-10 min.	5-10 min.
Counterstain / Coverslip	Varies	Varies	Varies


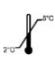





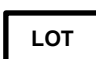
Product Limitations

Due to inherent variability present in immunohistochemical procedures (including fixation time of tissues, dilution factor of antibody, retrieval method utilized and incubation time), optimal performance should be established through the use of positive and negative controls. Results should be interpreted by a qualified medical professional.

References

1. de Celis JF, et al. Regulation and function of Spalt proteins during animal development". The International Journal of Developmental Biology. 2009; 53 (8-10): 1385-98.
2. Kohlhasse J, et al. SALL4 mutations in Okhiro syndrome (Duane-radial ray syndrome), acro-renal-ocular syndrome, and related disorders. Human Mutation. 2005; 26 (3): 176-83.
3. Miettinen M, et al. SALL4 expression in germ cell and non-germ cell tumors: a systematic immunohistochemical study of 3215 cases". The American Journal of Surgical Pathology. 2014; 38 (3): 410-20.
4. Zhang X, et al. SALL4: an emerging cancer biomarker and target. Cancer Letters. 2015; 357 (1): 55-62.
5. Ueno S, et al. Aberrant expression of SALL4 in acute B cell lymphoblastic leukemia: mechanism, function, and implication for a potential novel therapeutic target. Experimental Hematology. 2014; 42 (4): 307-316.
6. Cao D, Li J, et al. SALL4 is a novel diagnostic marker for testicular germ cell tumors. The American Journal of Surgical Pathology. 2009; 33 (7): 1065-77.
7. Zhang L, et al. SALL4, a novel marker for human gastric carcinogenesis and metastasis. Oncogene. 2014; 33 (48): 5491-500.
8. Kobayashi D, et al. SALL4 is essential for cancer cell proliferation and is overexpressed at early clinical stages in breast cancer. International Journal of Oncology. 2011; 38 (4): 933-9
9. Wei Cui et al. Differential expression of the novel oncogene, SALL4, in lymphoma, plasma cell myeloma, and acute lymphoblastic leukemia. Modern Pathology, 2006; 19(12), 1585-1592
10. U.S. Department of Health and Human Services: Centers for Disease Control and Prevention. Guidelines for Safe Work Practices in Human and Animal Medical Diagnostic Laboratories. Supplement / Vol. 61, January 6, 2012.

Symbol Key / Légende des symboles/Erläuterung der Symbole

	EMERGO EUROPE Prinsessegracht 20 2514 AP The Hague The Netherlands		Storage Temperature Limites de température Zulässiger Temperaturbereich		Manufacturer Fabricant Hersteller		Catalog Number Référence du catalogue Bestellnummer
	In Vitro Diagnostic Medical Device Dispositif médical de diagnostic in vitro In-Vitro-Diagnostikum		Read Instructions for Use Consulter les instructions d'utilisation Gebrauchsanweisung beachten		Expiration Date Utiliser jusque Verwendbar bis		Lot Number Code du lot Chargenbezeichnung

