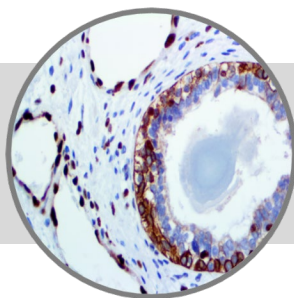


# Cytokeratin 5 & ERG, RMab

**Clone:** EP24/EP111

Rabbit Monoclonal


**Bio SB**  
 BIOSCIENCE FOR THE WORLD
 

www.biosb.com

*Inset: IHC of Cytokeratin 5 & ERG on a FFPE Prostate Tissue*

## Intended Use

For In Vitro Diagnostic Use.

This antibody is intended for use in Immunohistochemical applications on formalin-fixed paraffin-embedded tissues (FFPE), frozen tissue sections and cell preparations. Interpretation of results should be performed by a qualified medical professional.

\* The Cytokeratin 5 & ERG antibody cocktail, clones EP24, EP67 and EP111, has been manufactured using Epitomics RabMab® technology covered under Patent No.'s 5,675,063 and 7,402,409.

## Immunogen

CK5: A synthetic peptide corresponding to residues near the C-terminus of human CK-5 protein.

ERG: A synthetic peptide corresponding to residues on the C-terminus of human ERG protein.

## Summary and Explanation

Cytokeratin 5 is a type II cytokeratin found in squamous cell epithelium, myoepithelial cells of the breast and the basal cells of the prostate. Transcriptional regulator ERG is a nuclear protein that binds purine-rich sequences. ERG is expressed at higher levels in early myelocytes than in mature lymphocytes, and thus ERG may act as a regulator of differentiation of early hematopoietic cells. ERG can fuse with TMPRSS2 protein to form an oncogenic fusion gene commonly found in prostate cancer. Eighty percent of prostate tumors contain genomic fusions of TMPRSS2 and members of the ETS family of transcription factors.

Cytokeratin 5 is expressed in most epithelial mesotheliomas but not by most pulmonary adenocarcinomas and can be used to differentiate between the two. ERG antibody labels prostate cancer cells, endothelial cells, and lymphocytes.

<b>Antibody Type</b>	Rabbit Monoclonal	<b>Clone</b>	EP24/EP111
<b>Isotype</b>	IgG	<b>Reactivity</b>	Paraffin, Frozen
<b>Localization</b>	Cytoplasmic, Nuclear	<b>Control</b>	Breast, Prostate, Prostate Cancer
<b>Species Reactivity</b>		Human	

## Presentation

Cytokeratin 5 & ERG is a rabbit monoclonal antibody cocktail derived from cell culture supernatant that is concentrated, dialyzed, filter sterilized and diluted in buffer pH 7.5, containing BSA and sodium azide as a preservative.

<i>Catalog No.</i>	<i>Antibody Type</i>	<i>Dilution</i>	<i>Volume/Qty</i>
BSB 6611	Tinto Prediluted	Ready-to-Use	3.0 mL
BSB 6612	Tinto Prediluted	Ready-to-Use	7.0 mL
BSB 6613	Tinto Prediluted	Ready-to-Use	15.0 mL
BSB 6614	Concentrated	1:25 - 1:100	0.1 mL
BSB 6615	Concentrated	1:25 - 1:100	0.5 mL
BSB 6616	Concentrated	1:25 - 1:100	1.0 mL

## Control Slides Available

<i>Catalog No.</i>	<i>Quantity</i>
BSB 6617	5 slides

**Storage** Store at 2-8°C (Control Slides: Store at 20-25°C)

## Precautions

- For professional users only. Results should be interpreted by a qualified medical professional.
- This product contains <0.1% sodium azide (NaN<sub>3</sub>) as a preservative. Ensure proper handling procedures are used with this reagent.
- Always wear personal protective equipment such as laboratory coat, goggles and gloves when handling reagents.
- Dispose of unused solution with copious amount of water.
- Do not ingest reagent. If reagent is ingested, seek medical advice immediately.
- Avoid contact with eyes. If contact occurs, flush with large quantities of water.
- Follow safety precautions of the heating device used for epitope retrieval (TintoRetriever Pressure Cooker or similar).
- For additional safety information refer to Safety Data Sheet for this product.
- For complete recommendations for handling biological specimens, please refer to the CDC document, "Guidelines for Safe Work Practices in Human and Animal Medical Diagnostic Laboratories" (see References in this document).

## Stability

**This product is stable up to the expiration date on the product label.** Do not use after expiration date listed on package label. Temperature fluctuations should be avoided. Store appropriately when not in use, and avoid prolonged exposure to room temperature conditions.

## Specimen Preparation

**Paraffin sections:** The antibody can be used on formalin-fixed paraffin-embedded (FFPE) tissue sections. Ensure tissue undergoes appropriate fixation for best results. Pre-treatment of tissues with heat-induced epitope retrieval (HIER) is recommended using Bio SB ImmunoDNA Retriever with Citrate (BSB 0020-BSB 0023), ImmunoDNA Retriever with EDTA (BSB 0030-BSB 0033) or ImmunoDNA Digestor (BSB 0108-0112). See reverse side for complete protocol. Tissue should remain hydrated via use of Bio SB Immuno/DNA Washer solutions (BSB 0029 & BSB 0042).

**Frozen sections and cell preparations:** The antibody can be used for labeling acetone-fixed frozen sections and acetone-fixed cell preparations.

## Staining Procedure

- Cut and mount 3-5 micron formalin-fixed paraffin-embedded tissues on positively charged slides such as Bio SB Hydrophilic Plus Slides (BSB 7028).
- Air dry for 2 hours at 58° C.
- Deparaffinize, dehydrate and rehydrate tissues.
- Subject tissues to heat induced epitope retrieval (HIER) using a suitable retrieval solution such as ImmunoDNA Retriever with Citrate (BSB 0020-BSB 0023) or EDTA (BSB 0030-BSB 0033).
- Any of three heating methods may be used:
  - TintoRetriever Pressure Cooker or Equivalent**  
Place tissues/slides in a staining dish or coplin jar containing the ImmunoDNA Retriever with Citrate or EDTA, and place on trivet in the pressure cooker. Add 1-2 inches of distilled water to the pressure cooker and turn heat to high. Incubate for 15 minutes. Open and immediately transfer slides to room temperature.
  - TintoRetriever PT Module or Water Bath Method**  
Place tissues/slides in a pre-warmed staining dish or coplin jar containing the ImmunoDNA Retriever with Citrate or EDTA at 95°-99° C. Incubate for 30-60 minutes.
  - Conventional Steamer Method**  
Place tissues/slides in a pre-warmed staining dish or coplin jar containing the ImmunoDNA Retriever with Citrate or EDTA in a steamer, cover and steam for 30-60 minutes.
- After heat treatment, transfer slides in ImmunoDNA Retriever with Citrate or EDTA to room temperature and let stand for 15-20 minutes.
- For manual staining, perform antibody incubation at ambient temperature. For automated staining methods, perform antibody incubation according to instrument manufacturer's instructions.
- Wash slides with ImmunoDNA washer or DI water.
- Continue IHC staining protocol. Wash slides between each step with ImmunoDNA washer solution.

## Abbreviated Immunohistochemical Protocol

Step	ImmunoDetector AP/HRP	PolyDetector AP/HRP	PolyDetector Plus HRP
Peroxidase/AP Blocker	5 min.	5 min.	5 min
Primary Antibody	30-60 min.	30-60 min.	30-60 min.
1st Step Detection	10 min.	30-45 min.	15 min.
2nd Step Detection	10 min.	Not Applicable	15 min.
Substrate-Chromogen	5-10 min.	5-10 min.	5-10 min.
Counterstain / Coverslip	Varies	Varies	Varies

## Mounting Protocols

For detailed instructions using biodegradable permanent mounting media such as XyGreen PermaMunter (BSB 0169-0174) or organic solvent based resin such as PermaMunter (BSB 0094-0097), refer to PI0174 or PI0097.


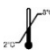





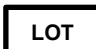
## Product Limitations

Due to inherent variability present in immunohistochemical procedures (including fixation time of tissues, dilution factor of antibody, retrieval method utilized and incubation time), optimal performance should be established through the use of positive and negative controls. Results should be interpreted by a qualified medical professional.

## References

- Lersch R, et al. Mol Cell Biol. 1989; 9:3685-97
- Livasy CA, et al. Hum Pathol. 2007 Feb; 38(2):197-204
- Reddy ES, et al. Oncogene. 1991 Dec; 6(12):2285-9
- Murakami K, et al. Oncogene. 1993 June; 8(6):1559-66
- Yu J, et al. Cancer Cell. 2010 May; 17(5):443-5
- U.S. Department of Health and Human Services: Centers for Disease Control and Prevention. Guidelines for Safe Work Practices in Human and Animal Medical Diagnostic Laboratories. Supplement / Vol. 61, January 6, 2012.

## Symbol Key / Légende des symboles/Erläuterung der Symbole

	EMERGO EUROPE Prinsessegracht 20 2514 AP The Hague The Netherlands		Storage Temperature Limites de température Zulässiger Temperaturbereich		Manufacturer Fabricant Hersteller		Catalog Number Référence du catalogue Bestellnummer
	In Vitro Diagnostic Medical Device Dispositif médical de diagnostic in vitro In-Vitro-Diagnostikum		Read Instructions for Use Consulter les instructions d'utilisation Gebrauchsanweisung beachten		Expiration Date Utiliser jusque Verwendbar bis		Lot Number Code du lot Chargenbezeichnung



69 Santa Felicia Dr., Santa Barbara, CA 93117, USA  
Tel. (805) 692-2768 | Tel. (800) 561-1145 | Fax. (805) 692-2769  
E-mail: sales@biosb.com | Website: www.biosb.com