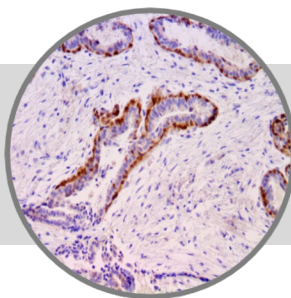


# Maspin

**Clone: BSB-92**

Mouse Monoclonal


**Bio SB**  
 BIOSCIENCE FOR THE WORLD
 

www.biosb.com

*Inset: IHC of Maspin on a FFPE Breast Tissue*

## Intended Use

For In Vitro Diagnostic Use.

This antibody is intended for use in Immunohistochemical applications on formalin-fixed paraffin-embedded tissues (FFPE), frozen tissue sections and cell preparations. Interpretation of results should be performed by a qualified medical professional.

## Immunogen

Synthetic peptide against the N-terminus of the human maspin protein.

## Summary and Explanation

Maspin (mammary serine protease inhibitor) is a protein that in humans is encoded by the SERPINB5 gene. This protein belongs to the serpin (serine protease inhibitor) superfamily. SERPINB5 was originally reported to function as a tumor suppressor gene in epithelial cells, suppressing the ability of cancer cells to invade and metastasize to other tissues.

Maspin has been shown in primary breast cancer to be regulated by wild-type p53, defining a new category of molecular targets of p53 that have the potential to negatively regulate tumor invasion and metastasis. Loss of Maspin expression correlates with increased tumor aggressiveness and poor prognosis in advanced breast and prostate cancer. In contrast, Maspin has been shown to be overexpressed in pancreatic, ovarian, thyroid, gastric, lung, bladder, breast, skin and colon cancer. Several studies have investigated the prognostic significance of Maspin expression in lung cancer. In primary non-small cell lung cancer (NSCLC) was an independent negative prognostic factor for overall survival, whereas strong nuclear Maspin expression was associated with increased overall and disease-free survival in patients with resectable NSCLC.

<b>Antibody Type</b>	Mouse Monoclonal	<b>Clone</b>	BSB-92
<b>Isotype</b>	IgG2a	<b>Reactivity</b>	Paraffin, Frozen
<b>Localization</b>	Cytoplasmic, Nuclear	<b>Control</b>	Prostate, Breast, Tonsil
<b>Species Reactivity</b>		Human	

## Precautions

1. For professional users only. Results should be interpreted by a qualified medical professional.
2. This product contains <0.1% sodium azide (NaN<sub>3</sub>) as a preservative. Ensure proper handling procedures are used with this reagent.
3. Always wear personal protective equipment such as laboratory coat, goggles and gloves when handling reagents.
4. Dispose of unused solution with copious amount of water.
5. Do not ingest reagent. If reagent is ingested, seek medical advice immediately.
6. Avoid contact with eyes. If contact occurs, flush with large quantities of water.
7. Follow safety precautions of the heating device used for epitope retrieval (TintoRetriever Pressure Cooker or similar).
8. For additional safety information refer to Safety Data Sheet for this product.
9. For complete recommendations for handling biological specimens, please refer to the CDC document, "Guidelines for Safe Work Practices in Human and Animal Medical Diagnostic Laboratories" (see References in this document).

## Presentation

Maspin is a mouse monoclonal antibody derived from cell culture supernatant that is concentrated, dialyzed, filter sterilized and diluted in buffer pH 7.5, containing BSA and sodium azide as a preservative.

<i>Catalog No.</i>	<i>Antibody Type</i>	<i>Dilution</i>	<i>Volume/Qty</i>
BSB 3265	Tinto Prediluted	Ready-to-Use	3.0 mL
BSB 3266	Tinto Prediluted	Ready-to-Use	7.0 mL
BSB 3267	Tinto Prediluted	Ready-to-Use	15.0 mL
BSB 3268	Concentrated	1: 25 - 1: 100	0.1 mL
BSB 3269	Concentrated	1: 25 - 1: 100	0.5 mL
BSB 3270	Concentrated	1: 25 - 1: 100	1.0 mL

## Control Slides Available

<i>Catalog No.</i>	<i>Quantity</i>
BSB 3271	5 slides

**Storage** Store at 2-8°C (Control Slides: Store at 20-25°C)

## Stability

**This product is stable up to the expiration date on the product label.** Do not use after expiration date listed on package label. Temperature fluctuations should be avoided. Store appropriately when not in use, and avoid prolonged exposure to room temperature conditions.

## Specimen Preparation

**Paraffin sections:** The antibody can be used on formalin-fixed paraffin-embedded (FFPE) tissue sections. Ensure tissue undergoes appropriate fixation for best results. Pre-treatment of tissues with heat-induced epitope retrieval (HIER) is recommended using Bio SB ImmunoDNA Retriever with Citrate (BSB 0020-BSB 0023), ImmunoDNA Retriever with EDTA (BSB 0030-BSB 0033) or ImmunoDNA Digestor (BSB 0108-0112). See reverse side for complete protocol. Tissue should remain hydrated via use of Bio SB Immuno/DNA Washer solutions (BSB 0029 & BSB 0042).

**Frozen sections and cell preparations:** The antibody can be used for labeling acetone-fixed frozen sections and acetone-fixed cell preparations.

## Staining Procedure

1. Cut and mount 3-5 micron formalin-fixed paraffin-embedded tissues on positively charged slides such as Bio SB Hydrophilic Plus Slides (BSB 7028).
2. Air dry for 2 hours at 58° C.
3. Deparaffinize, dehydrate and rehydrate tissues.
4. Subject tissues to heat induced epitope retrieval (HIER) using a suitable retrieval solution such as ImmunoDNA Retriever with Citrate (BSB 0020-BSB 0023) or EDTA (BSB 0030-BSB 0033).
5. Any of three heating methods may be used:
  - a. TintoRetriever Pressure Cooker or Equivalent**  
Place tissues/slides in a staining dish or coplin jar containing the ImmunoDNA Retriever with Citrate or EDTA, and place on trivet in the pressure cooker. Add 1-2 inches of distilled water to the pressure cooker and turn heat to high. Incubate for 15 minutes. Open and immediately transfer slides to room temperature.
  - b. TintoRetriever PT Module or Water Bath Method**  
Place tissues/slides in a pre-warmed staining dish or coplin jar containing the ImmunoDNA Retriever with Citrate or EDTA at 95°-99° C. Incubate for 30-60 minutes.
  - c. Conventional Steamer Method**  
Place tissues/slides in a pre-warmed staining dish or coplin jar containing the ImmunoDNA Retriever with Citrate or EDTA in a steamer, cover and steam for 30-60 minutes.
6. After heat treatment, transfer slides in ImmunoDNA Retriever with Citrate or EDTA to room temperature and let stand for 15-20 minutes.
7. For manual staining, perform antibody incubation at ambient temperature. For automated staining methods, perform antibody incubation according to instrument manufacturer's instructions.
8. Wash slides with ImmunoDNA washer or DI water.
9. Continue IHC staining protocol. Wash slides between each step with ImmunoDNA washer solution.

## Product Limitations

Due to inherent variability present in immunohistochemical procedures (including fixation time of tissues, dilution factor of antibody, retrieval method utilized and incubation time), optimal performance should be established through the use of positive and negative controls. Results should be interpreted by a qualified medical professional.

## References

1. Khalkhali-Ellis Z (December 2006). "Maspin: the new frontier". Clin. Cancer Res. 2006;12 (24): 7279-83
2. Zou Z, et al. "Maspin, a serpin with tumor-suppressing activity in human mammary epithelial cells". Science, 1994; 263 (5146): 526-9
3. Maass N, Nagasaki K, Ziebart M. et al Expression and regulation of tumor suppressor gene maspin in breast cancer. Clin Breast Cancer. 2002; 3(4):281-7.
4. Zou Z, et al. Maspin expression profile in human prostate cancer (CaP) and in vitro induction of Maspin expression by androgen ablation. Clin Cancer Res. 2002; 8(5):1172-7.
5. Sood A K, et al. The paradoxical expression of maspin in ovarian carcinoma. Clin Cancer Res. 2002; 8(9):2924-32.
6. Maass N, Hojo T, Ueding M. et al Expression of the tumor suppressor gene Maspin in human pancreatic cancers. Clin Cancer Res. 2001;7(4):812-7.
7. Woenckhaus, M., et al, Nuclear and cytoplasmic Maspin expression in primary non-small cell lung cancer. J Clin Pathol. 2007; 60(5): 483-486.
8. U.S. Department of Health and Human Services: Centers for Disease Control and Prevention. Guidelines for Safe Work Practices in Human and Animal Medical Diagnostic Laboratories. Supplement / Vol. 61, January 6, 2012.


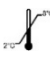






## Abbreviated Immunohistochemical Protocol

Step	ImmunoDetector AP/HRP	PolyDetector AP/HRP	PolyDetector Plus HRP
Peroxidase/AP Blocker	5 min.	5 min.	5 min
Primary Antibody	30-60 min.	30-60 min.	30-60 min.
1st Step Detection	10 min.	30-45 min.	15 min.
2nd Step Detection	10 min.	Not Applicable	15 min.
Substrate-Chromogen	5-10 min.	5-10 min.	5-10 min.
Counterstain / Coverslip	Varies	Varies	Varies

## Mounting Protocols

For detailed instructions using biodegradable permanent mounting media such as XyGreen PermaMunter (BSB 0169-0174) or organic solvent based resin such as PermaMunter (BSB 0094-0097), refer to PI0174 or PI0097.

## Symbol Key / Légende des symboles/Erläuterung der Symbole

	EMERGO EUROPE Prinsessegracht 20 2514 AP The Hague The Netherlands		Storage Temperature Limites de température Zulässiger Temperaturbereich		Manufacturer Fabricant Hersteller		Catalog Number Référence du catalogue Bestellnummer
	In Vitro Diagnostic Medical Device Dispositif médical de diagnostic in vitro In-Vitro-Diagnostikum		Read Instructions for Use Consulter les instructions d'utilisation Gebrauchsanweisung beachten		Expiration Date Utiliser jusque Verwendbar bis		Lot Number Code du lot Chargenbezeichnung



69 Santa Felicia Dr., Santa Barbara, CA 93117, USA  
Tel. (805) 692-2768 | Tel. (800) 561-1145 | Fax. (805) 692-2769  
E-mail: sales@biosb.com | Website: www.biosb.com