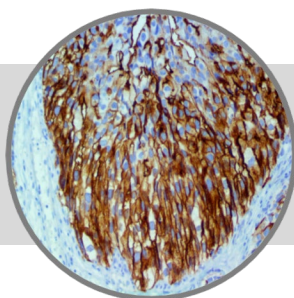


# Uroplakin III

Clone: Polyclonal  
Rabbit Polyclonal



**Bio SB**  
BIOSCIENCE FOR THE WORLD

www.biosb.com

*Inset: IHC of Uroplakin III on a FFPE Transitional Cell Carcinoma Tissue*

## Intended Use

For In Vitro Diagnostic Use.

This antibody is intended for use in Immunohistochemical applications on formalin-fixed paraffin-embedded tissues (FFPE), frozen tissue sections and cell preparations. Interpretation of results should be performed by a qualified medical professional.

## Immunogen

A synthetic peptide corresponding to the C-terminus of the human uroplakin III protein.

## Summary and Explanation

Uroplakins (UPs) are a family of transmembrane proteins (UPs Ia, Ib, II and III) that are specific differentiation products of urothelial cells. In non-neoplastic mammalian urothelium, UPs are expressed in the luminal surface plasmalemma of superficial (umbrella) cells, forming complexes of 16-nm crystalline particles. Uroplakin III is expressed in urothelial carcinomas, whereas many non-urothelial carcinomas were UPIII-negative. Recent studies have shown that UP expression might reflect the malignant potential of urothelial cancer cells as well as being cytodifferential markers of urothelial cells.

UPIII expression is strongly associated with lower tumor grades and lack of UPIII expression in urothelial tumors of the upper urinary tract is associated with much higher rates of metastases. Five-year specific survival is much worse for UPIII negative tumors (54%) than for UPIII positive tumors (100%). Apparently UPIII expression is a better indicator for the malignant potential of the tumor than the grade of the tumor.

|                           |                            |                   |                               |
|---------------------------|----------------------------|-------------------|-------------------------------|
| <b>Antibody Type</b>      | Rabbit Polyclonal          | <b>Clone</b>      | Polyclonal                    |
| <b>Isotype</b>            | IgG                        | <b>Reactivity</b> | Paraffin, Frozen              |
| <b>Localization</b>       | Membranous,<br>Cytoplasmic | <b>Control</b>    | Bladder, Bladder<br>Carcinoma |
| <b>Species Reactivity</b> |                            | Human             |                               |

## Presentation

Uroplakin III is a purified immunoglobulin fraction of rabbit antiserum that is filter sterilized and diluted in buffer pH 7.5, containing BSA and sodium azide as a preservative.

| <i>Catalog No.</i> | <i>Antibody Type</i> | <i>Dilution</i> | <i>Volume/Qty</i> |
|--------------------|----------------------|-----------------|-------------------|
| BSB 2286           | Tinto Prediluted     | Ready-to-Use    | 3.0 mL            |
| BSB 2287           | Tinto Prediluted     | Ready-to-Use    | 7.0 mL            |
| BSB 2288           | Tinto Prediluted     | Ready-to-Use    | 15.0 mL           |
| BSB 2289           | Concentrated         | 1:25 - 1:100    | 0.1 mL            |
| BSB 2290           | Concentrated         | 1:25 - 1:100    | 0.5 mL            |
| BSB 2291           | Concentrated         | 1:25 - 1:100    | 1.0 mL            |

## Control Slides Available

| <i>Catalog No.</i> | <i>Quantity</i> |
|--------------------|-----------------|
| BSB 2292           | 5 slides        |

## Precautions

- For professional users only. Results should be interpreted by a qualified medical professional.
- This product contains <0.1% sodium azide (NaN<sub>3</sub>) as a preservative. Ensure proper handling procedures are used with this reagent.
- Always wear personal protective equipment such as laboratory coat, goggles and gloves when handling reagents.
- Dispose of unused solution with copious amount of water.
- Do not ingest reagent. If reagent is ingested, seek medical advice immediately.
- Avoid contact with eyes. If contact occurs, flush with large quantities of water.
- Follow safety precautions of the heating device used for epitope retrieval (TintoRetriever Pressure Cooker or similar).
- For additional safety information refer to Safety Data Sheet for this product.
- For complete recommendations for handling biological specimens, please refer to the CDC document, "Guidelines for Safe Work Practices in Human and Animal Medical Diagnostic Laboratories" (see References in this document).

**Storage** Store at 2-8°C (Control Slides: Store at 20-25°C)

## Stability

**This product is stable up to the expiration date on the product label.** Do not use after expiration date listed on package label. Temperature fluctuations should be avoided. Store appropriately when not in use, and avoid prolonged exposure to room temperature conditions.

## Specimen Preparation

**Paraffin sections:** The antibody can be used on formalin-fixed paraffin-embedded (FFPE) tissue sections. Ensure tissue undergoes appropriate fixation for best results. Pre-treatment of tissues with heat-induced epitope retrieval (HIER) is recommended using Bio SB ImmunoDNA Retriever with Citrate (BSB 0020-BSB 0023), ImmunoDNA Retriever with EDTA (BSB 0030-BSB 0033) or ImmunoDNA Digestor (BSB 0108-0112). See reverse side for complete protocol. Tissue should remain hydrated via use of Bio SB Immuno/DNA Washer solutions (BSB 0029 & BSB 0042).

**Frozen sections and cell preparations:** The antibody can be used for labeling acetone-fixed frozen sections and acetone-fixed cell preparations.

## Staining Procedure

- Cut and mount 3-5 micron formalin-fixed paraffin-embedded tissues on positively charged slides such as Bio SB Hydrophilic Plus Slides (BSB 7028).
- Air dry for 2 hours at 58° C.
- Deparaffinize, dehydrate and rehydrate tissues.
- Subject tissues to heat induced epitope retrieval (HIER) using a suitable retrieval solution such as ImmunoDNA Retriever with Citrate (BSB 0020-BSB 0023) or EDTA (BSB 0030-BSB 0033).
- Any of three heating methods may be used:
  - TintoRetriever Pressure Cooker or Equivalent**  
Place tissues/slides in a staining dish or coplin jar containing the ImmunoDNA Retriever with Citrate or EDTA, and place on trivet in the pressure cooker. Add 1-2 inches of distilled water to the pressure cooker and turn heat to high. Incubate for 15 minutes. Open and immediately transfer slides to room temperature.
  - TintoRetriever PT Module or Water Bath Method**  
Place tissues/slides in a pre-warmed staining dish or coplin jar containing the ImmunoDNA Retriever with Citrate or EDTA at 95°-99° C. Incubate for 30-60 minutes.
  - Conventional Steamer Method**  
Place tissues/slides in a pre-warmed staining dish or coplin jar containing the ImmunoDNA Retriever with Citrate or EDTA in a steamer, cover and steam for 30-60 minutes.
- After heat treatment, transfer slides in ImmunoDNA Retriever with Citrate or EDTA to room temperature and let stand for 15-20 minutes.
- For manual staining, perform antibody incubation at ambient temperature. For automated staining methods, perform antibody incubation according to instrument manufacturer's instructions.
- Wash slides with ImmunoDNA washer or DI water.
- Continue IHC staining protocol. Wash slides between each step with ImmunoDNA washer solution.

## Abbreviated Immunohistochemical Protocol

| Step                     | ImmunoDetector AP/HRP | PolyDetector AP/HRP | PolyDetector Plus HRP |
|--------------------------|-----------------------|---------------------|-----------------------|
| Peroxidase/AP Blocker    | 5 min.                | 5 min.              | 5 min                 |
| Primary Antibody         | 30-60 min.            | 30-60 min.          | 30-60 min.            |
| 1st Step Detection       | 10 min.               | 30-45 min.          | 15 min.               |
| 2nd Step Detection       | 10 min.               | Not Applicable      | 15 min.               |
| Substrate-Chromogen      | 5-10 min.             | 5-10 min.           | 5-10 min.             |
| Counterstain / Coverslip | Varies                | Varies              | Varies                |

## Mounting Protocols

For detailed instructions using biodegradable permanent mounting media such as XyGreen PermaMounter (BSB 0169-0174) or organic solvent based resin such as PermaMounter (BSB 0094-0097), refer to PI0174 or PI0097.


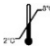






## Product Limitations

Due to inherent variability present in immunohistochemical procedures (including fixation time of tissues, dilution factor of antibody, retrieval method utilized and incubation time), optimal performance should be established through the use of positive and negative controls. Results should be interpreted by a qualified medical professional.

## References

- Badalament RA, et al. J Urol. 1990; 144:859-63
- Hall MC, et al. Urology. 1998; 52:594-601
- Ohtsuka Y, et al. BJU Int. 2006 Jun; 97(6):1322-6
- Oldsburgh J, et al. J Pathol. 2003; 199:41-9
- U.S. Department of Health and Human Services: Centers for Disease Control and Prevention. Guidelines for Safe Work Practices in Human and Animal Medical Diagnostic Laboratories. Supplement / Vol. 61, January 6, 2012.

## Symbol Key / Légende des symboles/Erläuterung der Symbole

|   |  |   |  |   |  |   |   |
|---|--|---|--|---|--|---|---|
|  | EMERGO EUROPE<br>Prinsessegracht 20<br>2514 AP The Hague<br>The Netherlands                              |  | Storage Temperature<br>Limites de température<br>Zulässiger Temperaturbereich                        |  | Manufacturer<br>Fabricant<br>Hersteller              |  | Catalog Number<br>Référence du catalogue<br>Bestellnummer |
|  | In Vitro Diagnostic Medical Device<br>Dispositif médical de diagnostic in vitro<br>In-Vitro-Diagnostikum |  | Read Instructions for Use<br>Consulter les instructions d'utilisation<br>Gebrauchsanweisung beachten |  | Expiration Date<br>Utiliser jusque<br>Verwendbar bis |  | Lot Number<br>Code du lot<br>Chargenbezeichnung           |



69 Santa Felicia Dr., Santa Barbara, CA 93117, USA  
Tel. (805) 692-2768 | Tel. (800) 561-1145 | Fax. (805) 692-2769  
E-mail: sales@biosb.com | Website: www.biosb.com