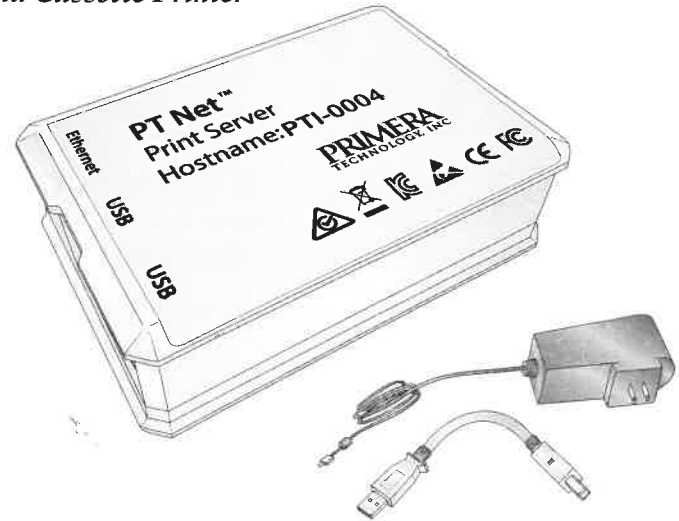


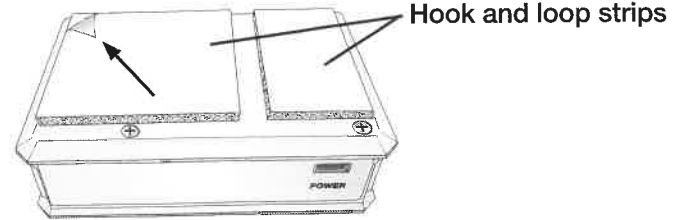
PT Net™ Print Server

*for Signature Slide Printer
and Cassette Printer*



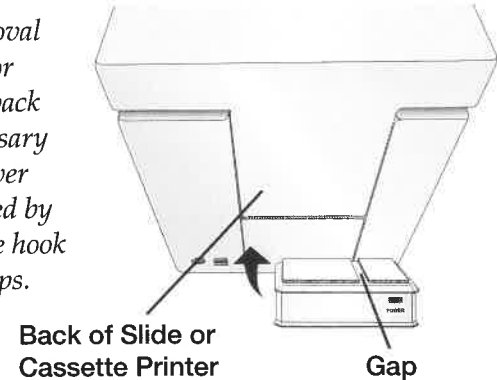
Setup

- 1 Remove the Adhesive backing paper from the hook and loop strips.

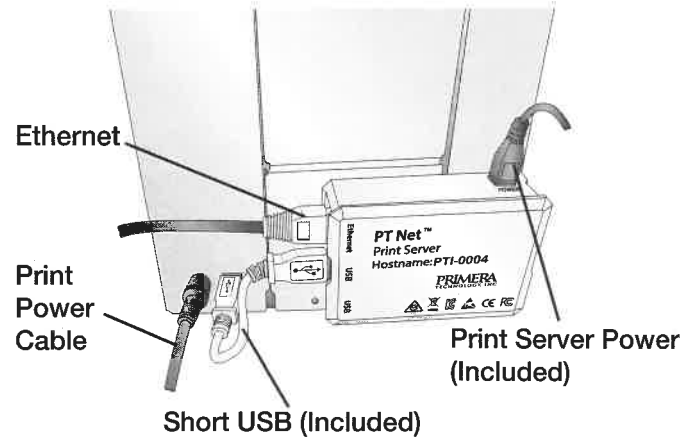


- 2 Position the Print Server so that the gap in the hook and loop strips align with the seam on the back of the printer. Press the Print server into place.

Note: If removal of the covers or access to the back panel is necessary the Print Server can be removed by separating the hook and loops strips.



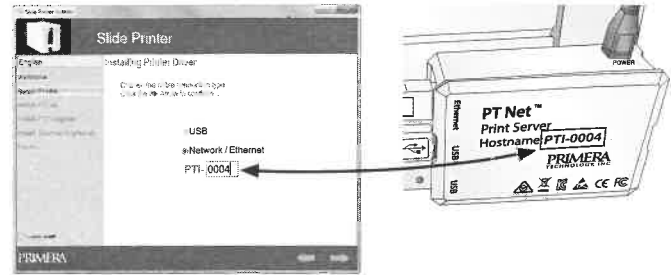
- 3 Connect cables as shown. USB can be connected to any of the four ports on the Print Server.



- 4 Download the Full Installer for your printer here:
- Slide Printer** - <http://www.primerahealthcare.com/slideprintersupport.html>
 - Cassette Printer** - <http://www.primerahealthcare.com/cassetteprintersupport.html>

Note: The latest version must be installed.

- 5 Install the Software. During installation you will be prompted to choose USB or Network. Choose Network. Enter the Hostname shown on your Print Server. Follow the prompts to complete the installation.



- 6 If setup and installation were successful, when you open PTLab you will see the Printer Server hostname below the printer name.

