

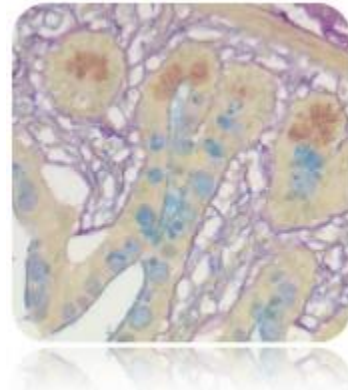


Colloidal Iron Stain Kit

Description: The Colloidal Iron Stain Kit is designed for the histological visualization of acid mucopolysaccharides.

Acid Mucopolysaccharides: Blue
Collagen: Red

Uses/Limitations: For In-Vitro Diagnostic use only.
Histological applications.
Do not use past expiration date.
Use caution when handling these reagents.



Control Tissue: Colon
Small Intestine

Availability/Contents:

<u>Kit Contents</u>	<u>Volume</u>	<u>Storage</u>
Acetic Acid Solution (12%)	500 ml	18-25°C
Hydrochloric Acid Solution (1N)	125 ml	18-25°C
Potassium Ferrocyanide Solution (3%)	125 ml	18-25°C
Colloidal Iron Stock Solution	125 ml	18-25°C
Van Gieson's Solution	125 ml	18-25°C

Precautions: Avoid contact with skin and eyes.
May cause burns.
Harmful if swallowed.
Follow all Federal, State, and local regulations regarding disposal.
Use in chemical fume hood whenever possible.

Prepare the Following Solutions Immediately Before Use.

Working Colloidal Iron Solution: 5 ml Acetic Acid Solution (12%)
15 ml Distilled Water
20 ml Colloidal Iron Stock Solution

Working Iron Stain Solution: 20 ml Hydrochloric Acid Solution (1N)
20 ml Potassium Ferrocyanide Solution (3%)

Storage: 18° C  25° C




Procedure (Standard):

1. Deparaffinize sections if necessary and hydrate to distilled water.
2. Cover tissue section with Acetic Acid Solution (12%) for 30 seconds.
3. Place slide in Working Colloidal Iron Solution for 30 minutes with occasional gentle agitation. Use once and discard.
4. Rinse thoroughly in 3 changes of Acetic Acid Solution (12%) for 2 minutes each.
5. Stain slide in Working Iron Stain Solution for 10 minutes with occasional gentle agitation. Use once and discard.
6. Rinse in 3 changes of distilled water.
7. Stain tissue section with Van Gieson's Solution for 30 seconds.
8. Dehydrate in 3 changes of absolute alcohol.
9. Clear, and mount in synthetic resin.

References:

1. Muller, G. ACTA Histochem (Jena); 2:68, 1955
2. Tickoo, S.K., et al. Colloidal iron staining in renal epithelial neoplasms, including chromophobe renal cell carcinoma: emphasis on technique and patterns of staining. American Journal of Surgical Pathology, 1998 April; 22(4): pages 419-424.

Storage: 18° C  25° C