



10% Neutral Buffered Formalin

Specimen Transport Container



DANGER. Contains Formaldehyde. Harmful by inhalation and if swallowed. Irritating to skin, eyes, & respiratory system. May cause cancer; repeated or prolonged exposure increases the risk. Read SDS for further hazard and safety information. Per OSHA store in product packaging until use.

Cancer Diagnostics Inc. 4300 Emperor Blvd. #400 Durham, NC, 27703 Tel (877) 846-5393

cancerdiagnostics.com

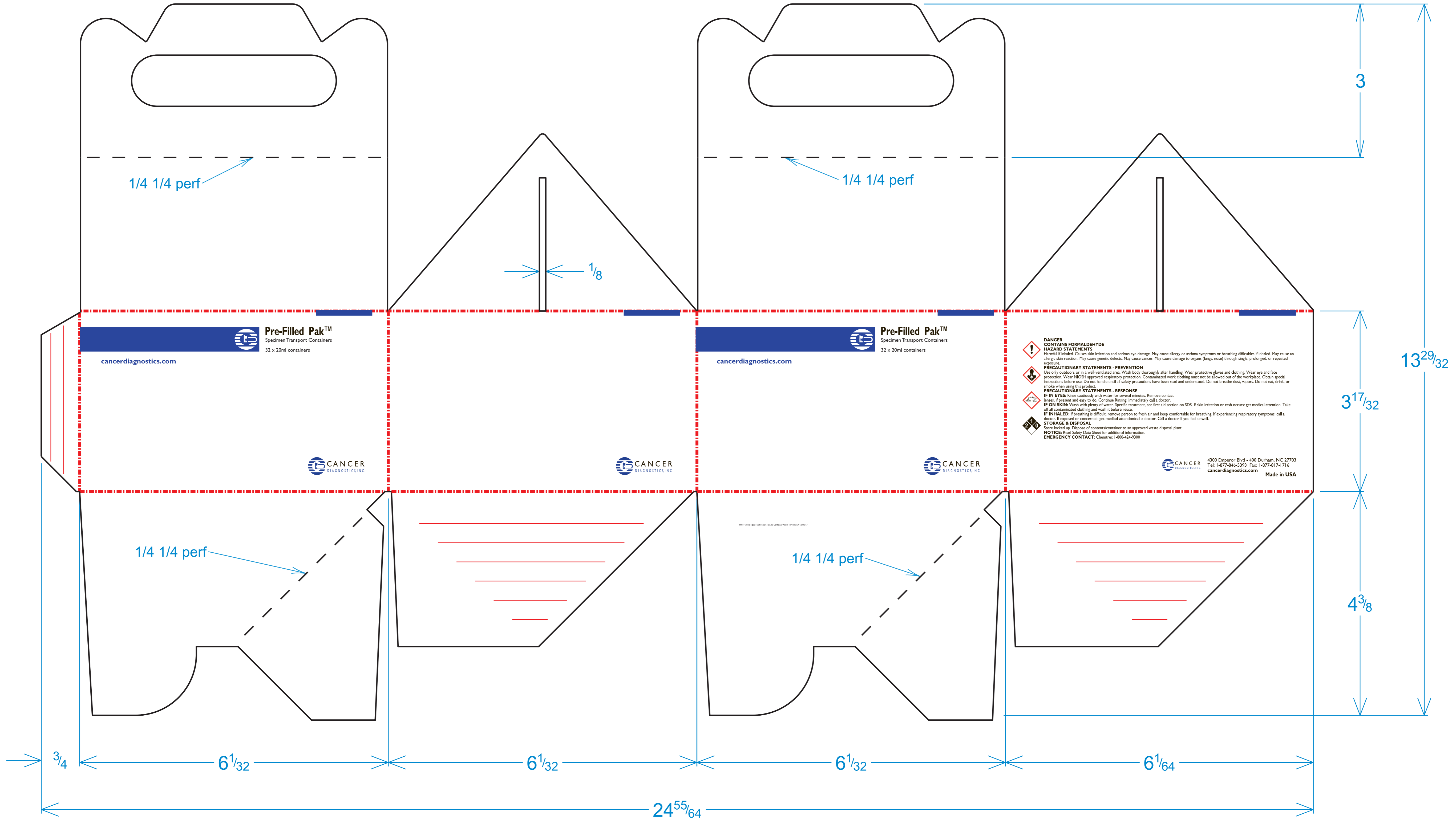
PATIENT:

DOB:

DATE:

SPECIMEN:

DOCTOR:



1/4 1/4 perf

1/4 1/4 perf

1/8

3

Pre-Filled Pak™
Specimen Transport Containers
32 x 20ml containers
cancerdiagnostics.com

Pre-Filled Pak™
Specimen Transport Containers
32 x 20ml containers
cancerdiagnostics.com

DANGER
CONTAINS FORMALDEHYDE
HAZARD STATEMENTS
Harmful if inhaled. Causes skin irritation and serious eye damage. May cause allergy or asthma symptoms or breathing difficulties if inhaled. May cause an allergic skin reaction. May cause genetic defects. May cause cancer. May cause damage to organs (lungs, nose) through single, prolonged, or repeated exposures.
PRECAUTIONARY STATEMENTS - PREVENTION
Use only outdoors or in a well-ventilated area. Wash body thoroughly after handling. Wear protective gloves and clothing. Wear eye and face protection. Wear NIOSH approved respiratory protection. Contaminated work clothing must not be allowed out of the workplace. Obtain special instructions before use. Do not handle until all safety precautions have been read and understood. Do not breathe dust, vapors. Do not eat, drink, or smoke when using this product.
PRECAUTIONARY STATEMENTS - RESPONSE
IF IN EYES: Rinse cautiously with water for several minutes. Remove contact lenses, if present and easy to do. Continue rinsing. Immediately call a doctor.
IF ON SKIN: Wash with plenty of water. Specific treatment, see first aid section on SDS. If skin irritation or rash occurs: get medical attention. Take off all contaminated clothing and wash it before reuse.
IF INHALED: If breathing is difficult, remove person to fresh air and keep comfortable for breathing. If experiencing respiratory symptoms: call a doctor. If exposed or concerned: get medical attention/call a doctor. Call a doctor if you feel unwell.
STORAGE & DISPOSAL
Store locked up. Dispose of contents/container to an approved waste disposal plant.
NOTICE: Read Safety Data Sheet for additional information.
EMERGENCY CONTACT: Chemtrec: 1-800-424-9300

CANCER
DIAGNOSTIC CLINIC

CANCER
DIAGNOSTIC CLINIC

CANCER
DIAGNOSTIC CLINIC

CANCER
DIAGNOSTIC CLINIC
4300 Emperor Blvd - 400 Durham, NC 27703
Tel: 1-877-846-5393 Fax: 1-877-817-1716
cancerdiagnostics.com
Made in USA

1/4 1/4 perf

1/4 1/4 perf

13²⁹/₃₂

3¹⁷/₃₂

4³/₈

3/4

6¹/₃₂

6¹/₃₂

6¹/₃₂

6¹/₆₄

24⁵⁵/₆₄



Pre-Filled Pak™

Specimen Transport Containers

4 packs of 32, 20mL containers

cancerdiagnostics.com

REF #FX1006-HPY

CS/128

LOT



DANGER - CONTAINS FORMALDEHYDE

HAZARD STATEMENTS

Harmful if inhaled. Causes skin irritation and serious eye damage.

May cause allergy or asthma symptoms or breathing difficulties if inhaled. May cause an allergic skin reaction. May cause genetic defects. May cause cancer. May cause damage to organs (lungs, nose) through single, prolonged, or repeated exposure.



PRECAUTIONARY STATEMENTS - PREVENTION

Use only outdoors or in a well-ventilated area. Wash body thoroughly after handling. Wear protective gloves and clothing. Wear eye and face protection. Wear NIOSH approved respiratory protection. Contaminated work clothing must not be allowed out of the workplace. Obtain special instructions before use. Do not handle until all safety precautions have been read and understood. Do not breathe dust, vapors. Do not eat, drink, or smoke when using this product.



PRECAUTIONARY STATEMENTS - RESPONSE

IF IN EYES: Rinse cautiously with water for several minutes. Remove contact lenses, if present and easy to do. Continue Rinsing. Immediately call a doctor.

IF ON SKIN: Wash with plenty of water. Specific treatment, see first aid section on SDS. If skin irritation or rash occurs: get medical attention. Take off all contaminated clothing and wash it before reuse.



IF INHALED: If breathing is difficult, remove person to fresh air and keep comfortable for breathing. If experiencing respiratory symptoms: call a doctor. If exposed or concerned: get medical attention/call a doctor. Call a doctor if you feel unwell.

STORAGE & DISPOSAL: Store locked up at room temperature. Dispose of contents/container to an approved waste disposal plant.

NOTICE: Read Safety Data Sheet for additional information. For in vitro diagnostics use.

EMERGENCY CONTACT: Chemtec 1-800-424-9300



4300 Emperor Blvd - 400 Durham, NC 27703

Tel: 1-877-846-5393 Fax: 1-877-817-1716

cancerdiagnostics.com

MX1440 Tote Prefills 20mL 128CT AWW-18783 Rev.C 2020-07-30

Made in USA



Pre-Filled Pak™

Specimen Transport Containers

24 packs of 32, 20mL containers

cancerdiagnostics.com

REF #FX1006-HPY-768 CS/768

LOT



DANGER - CONTAINS FORMALDEHYDE

HAZARD STATEMENTS

Harmful if inhaled. Causes skin irritation and serious eye damage.

May cause allergy or asthma symptoms or breathing difficulties if inhaled. May cause an allergic skin reaction. May cause genetic defects. May cause cancer. May cause damage to organs (lungs, nose) through single, prolonged, or repeated exposure.



PRECAUTIONARY STATEMENTS - PREVENTION

Use only outdoors or in a well-ventilated area. Wash body thoroughly after handling. Wear protective gloves and clothing. Wear eye and face protection. Wear NIOSH approved respiratory protection. Contaminated work clothing must not be allowed out of the workplace. Obtain special instructions before use. Do not handle until all safety precautions have been read and understood. Do not breathe dust, vapors. Do not eat, drink, or smoke when using this product.



PRECAUTIONARY STATEMENTS - RESPONSE

IF IN EYES: Rinse cautiously with water for several minutes. Remove contact lenses, if present and easy to do. Continue Rinsing. Immediately call a doctor.

IF ON SKIN: Wash with plenty of water. Specific treatment, see first aid section on SDS. If skin irritation or rash occurs: get medical attention. Take off all contaminated clothing and wash it before reuse.

IF INHALED: If breathing is difficult, remove person to fresh air and keep comfortable for breathing. If experiencing respiratory symptoms: call a doctor. If exposed or concerned: get medical attention/call a doctor. Call a doctor if you feel unwell.

STORAGE & DISPOSAL: Store locked up at room temperature. Dispose of contents/container to an approved waste disposal plant.

NOTICE: Read Safety Data Sheet for additional information. For in vitro diagnostics use.

EMERGENCY CONTACT: Chemtec 1-800-424-9300



4300 Emperor Blvd - 400 Durham, NC 27703
Tel: 1-877-846-5393 Fax: 1-877-817-1716
cancerdiagnostics.com

MX1441 Tote Prefills 20mL 768CT AWW-18812 Rev.C 2020-07-30

Made in USA



Pre-Filled Pak™

Specimen Transport Containers

2 packs of 24, 40mL containers

cancerdiagnostics.com

REF #FX1007-HPY

CS/48

LOT



DANGER - CONTAINS FORMALDEHYDE

HAZARD STATEMENTS

Harmful if inhaled. Causes skin irritation and serious eye damage.

May cause allergy or asthma symptoms or breathing difficulties if inhaled. May cause an allergic skin reaction. May cause genetic defects. May cause cancer. May cause damage to organs (lungs, nose) through single, prolonged, or repeated exposure.



PRECAUTIONARY STATEMENTS - PREVENTION

Use only outdoors or in a well-ventilated area. Wash body thoroughly after handling. Wear protective gloves and clothing. Wear eye and face protection. Wear NIOSH approved respiratory protection. Contaminated work clothing must not be allowed out of the workplace. Obtain special instructions before use. Do not handle until all safety precautions have been read and understood. Do not breathe dust, vapors. Do not eat, drink, or smoke when using this product.



PRECAUTIONARY STATEMENTS - RESPONSE

IF IN EYES: Rinse cautiously with water for several minutes. Remove contact lenses, if present and easy to do. Continue Rinsing. Immediately call a doctor.

IF ON SKIN: Wash with plenty of water. Specific treatment, see first aid section on SDS. If skin irritation or rash occurs: get medical attention. Take off all contaminated clothing and wash it before reuse.

IF INHALED: If breathing is difficult, remove person to fresh air and keep comfortable for breathing. If experiencing respiratory symptoms: call a doctor. If exposed or concerned: get medical attention/call a doctor. Call a doctor if you feel unwell.

STORAGE & DISPOSAL: Store locked up at room temperature. Dispose of contents/container to an approved waste disposal plant.

NOTICE: Read Safety Data Sheet for additional information. For in vitro diagnostics use.

EMERGENCY CONTACT: Chemtec 1-800-424-9300



4300 Emperor Blvd - 400 Durham, NC 27703
Tel: 1-877-846-5393 Fax: 1-877-817-1716
cancerdiagnostics.com

MX1442 Tote Prefills 40mL 48CT AWB-18784 Rev.B 2020-07-30

Made in USA



Pre-Filled Pak™

Specimen Transport Containers

2 packs of 27, 60mL containers

cancerdiagnostics.com

REF #FX1008-HPY

CS/54

LOT



DANGER - CONTAINS FORMALDEHYDE

HAZARD STATEMENTS

Harmful if inhaled. Causes skin irritation and serious eye damage.

May cause allergy or asthma symptoms or breathing difficulties if inhaled. May cause an allergic skin reaction. May cause genetic defects. May cause cancer. May cause damage to organs (lungs, nose) through single, prolonged, or repeated exposure.



PRECAUTIONARY STATEMENTS - PREVENTION

Use only outdoors or in a well-ventilated area. Wash body thoroughly after handling. Wear protective gloves and clothing. Wear eye and face protection. Wear NIOSH approved respiratory protection. Contaminated work clothing must not be allowed out of the workplace. Obtain special instructions before use. Do not handle until all safety precautions have been read and understood. Do not breathe dust, vapors. Do not eat, drink, or smoke when using this product.



PRECAUTIONARY STATEMENTS - RESPONSE

IF IN EYES: Rinse cautiously with water for several minutes. Remove contact lenses, if present and easy to do. Continue Rinsing. Immediately call a doctor.

IF ON SKIN: Wash with plenty of water. Specific treatment, see first aid section on SDS. If skin irritation or rash occurs: get medical attention. Take off all contaminated clothing and wash it before reuse.

IF INHALED: If breathing is difficult, remove person to fresh air and keep comfortable for breathing. If experiencing respiratory symptoms: call a doctor. If exposed or concerned: get medical attention/call a doctor. Call a doctor if you feel unwell.

STORAGE & DISPOSAL: Store locked up at room temperature. Dispose of contents/container to an approved waste disposal plant.

NOTICE: Read Safety Data Sheet for additional information. For in vitro diagnostics use.

EMERGENCY CONTACT: Chemtec 1-800-424-9300



4300 Emperor Blvd - 400 Durham, NC 27703
Tel: 1-877-846-5393 Fax: 1-877-817-1716
cancerdiagnostics.com

MX1443 Tote Prefills 60mL 54CT AWB-18785 Rev.B 2020-07-30

Made in USA



Pre-Filled Pak™

Specimen Transport Containers

4 packs of 12, 90mL containers

cancerdiagnostics.com

REF #FX1009-HPY

CS/48

LOT



DANGER - CONTAINS FORMALDEHYDE

HAZARD STATEMENTS

Harmful if inhaled. Causes skin irritation and serious eye damage.

May cause allergy or asthma symptoms or breathing difficulties if inhaled. May cause an allergic skin reaction. May cause genetic defects. May cause cancer. May cause damage to organs (lungs, nose) through single, prolonged, or repeated exposure.



PRECAUTIONARY STATEMENTS - PREVENTION

Use only outdoors or in a well-ventilated area. Wash body thoroughly after handling. Wear protective gloves and clothing. Wear eye and face protection. Wear NIOSH approved respiratory protection. Contaminated work clothing must not be allowed out of the workplace. Obtain special instructions before use. Do not handle until all safety precautions have been read and understood. Do not breathe dust, vapors. Do not eat, drink, or smoke when using this product.



PRECAUTIONARY STATEMENTS - RESPONSE

IF IN EYES: Rinse cautiously with water for several minutes. Remove contact lenses, if present and easy to do. Continue Rinsing. Immediately call a doctor.

IF ON SKIN: Wash with plenty of water. Specific treatment, see first aid section on SDS. If skin irritation or rash occurs: get medical attention. Take off all contaminated clothing and wash it before reuse.



IF INHALED: If breathing is difficult, remove person to fresh air and keep comfortable for breathing. If experiencing respiratory symptoms: call a doctor. If exposed or concerned: get medical attention/call a doctor. Call a doctor if you feel unwell.

STORAGE & DISPOSAL: Store locked up at room temperature. Dispose of contents/container to an approved waste disposal plant.

NOTICE: Read Safety Data Sheet for additional information. For in vitro diagnostics use.

EMERGENCY CONTACT: Chemtec 1-800-424-9300



4300 Emperor Blvd - 400 Durham, NC 27703
Tel: 1-877-846-5393 Fax: 1-877-817-1716
cancerdiagnostics.com

MX1444 Tote Prefills 90mL 48CT AWB-18786 Rev.B 2020-07-30

Made in USA



Pre-Filled Pak™

Specimen Transport Containers

2 packs of 24, 120mL containers

cancerdiagnostics.com

REF #FX1010-HPY

CS/48

LOT



DANGER - CONTAINS FORMALDEHYDE

HAZARD STATEMENTS

Harmful if inhaled. Causes skin irritation and serious eye damage.

May cause allergy or asthma symptoms or breathing difficulties if inhaled. May cause an allergic skin reaction. May cause genetic defects. May cause cancer. May cause damage to organs (lungs, nose) through single, prolonged, or repeated exposure.



PRECAUTIONARY STATEMENTS - PREVENTION

Use only outdoors or in a well-ventilated area. Wash body thoroughly after handling. Wear protective gloves and clothing. Wear eye and face protection. Wear NIOSH approved respiratory protection. Contaminated work clothing must not be allowed out of the workplace. Obtain special instructions before use. Do not handle until all safety precautions have been read and understood. Do not breathe dust, vapors. Do not eat, drink, or smoke when using this product.



PRECAUTIONARY STATEMENTS - RESPONSE

IF IN EYES: Rinse cautiously with water for several minutes. Remove contact lenses, if present and easy to do. Continue Rinsing. Immediately call a doctor.

IF ON SKIN: Wash with plenty of water. Specific treatment, see first aid section on SDS. If skin irritation or rash occurs: get medical attention. Take off all contaminated clothing and wash it before reuse.

IF INHALED: If breathing is difficult, remove person to fresh air and keep comfortable for breathing. If experiencing respiratory symptoms: call a doctor. If exposed or concerned: get medical attention/call a doctor. Call a doctor if you feel unwell.

STORAGE & DISPOSAL: Store locked up at room temperature. Dispose of contents/container to an approved waste disposal plant.

NOTICE: Read Safety Data Sheet for additional information. For in vitro diagnostics use.

EMERGENCY CONTACT: Chemtec 1-800-424-9300



4300 Emperor Blvd - 400 Durham, NC 27703

Tel: 1-877-846-5393 Fax: 1-877-817-1716

cancerdiagnostics.com

MX1445 Tote Prefills 120mL 48CT AWW-18787 Rev.B 2020-07-30

Made in USA