

Sarcoma & Soft Tissue Cont.

ANTIBODY	ANTIBODY TYPE	CLONE
Myoglobin	RPab	N/A
Myoglobin	RMab	EP87
NKX2.2	RMab	EP336
PDGFR-B	RMab	RBT-PDGFRB
Podoplanin/d2-40	MMab	D2-40
* STAT6	RMab	EP325
STAT6	RPab	Polyclonal

Thyroid & Parathyroid

ANTIBODY	ANTIBODY TYPE	CLONE
■ BRAF V600E	RMab	RM8
Cadherin-6	RMab	EP217
Calcitonin	RPab	N/A
Calcitonin	RMab	EP92
CD117	RMab	EP10
Cytokeratin 19	MMab	BSB-34
Cytokeratin 19	RMab	EP72
Galectin-3	MMab	9C4
IgG4	MMab	BSB-96
IgG4	RMab	EP138
P63	RMab	EP174
Parafibromin	MMab	BSB-50
Parathyroid Hormone/PTH	MMab	BSB-24
PAX-8	RMab	EP298
PAX-8	RMab	ZR-1
S100A6	RMab	EP313
Synaptophysin	RPab	Polyclonal
Synaptophysin	RMab	EP158
Thyroglobulin	MMab	BSB-49
Thyroglobulin	MMab	2H11/6E1
Thyroglobulin	RMab	EP250
Thyroid Peroxidase	RMab	EP159
TTF-1	MMab	8G7G3/1

Undifferentiated

ANTIBODY	ANTIBODY TYPE	CLONE
Actin, Muscle Specific	MMab	HHF35
Alpha-Fetaprotein	MMab	BSB-23
Alpha-Fetaprotein	RMab	EP209
CD34	MMab	QBEnd/10
CD34	RMab	EP88
CD45	MMab	2B11 & PD7/26
CD56	MMab	123C3.D5
CD99	MMab	BSB-9
CD117	RMab	EP10

Undifferentiated Cont.

Cytokeratin Cocktail AE1&AE3	MMab	AE1/AE3
Cytokeratin HMW/AE3	MMab	AE3
Cytokeratin LMW/AE1	MMab	AE1
Cytokeratin OSCAR	MMab	OSCAR
Desmin	MMab	D33
Desmin	RMab	EP15
Galectin-3	MMab	9C4
hCG	MMab	BSB-38
Melanoma/PNL2	MMab	PNL2
Myogenin	MMab	F5D
Myogenin	RMab	EP162
OCT-4	RMab	EP143
p57	MMab	KP10
PLAP	MMab	BSB-47
PLAP	RMab	EP194
S100	MMab	4C4.9
SALL4	MMab	6E3
SALL4	RMab	EP299
SOX-2	RMab	EP103
Synaptophysin	RPab	Polyclonal
Synaptophysin	RMab	EP158
Vimentin	MMab	V9
Vimentin	RMab	EP21

Ordering Info: Mouse and Rabbit Antibodies

Predilute/Ready-to-use

3 mL Predilute (30 tests)

7 mL Predilute (70 tests)

15 mL Predilute (150 tests)

- No need for optimization
- Compatible with biotin or polymer based detection systems
- Predilute/Ready-to-use: diluted in proprietary protein blocker/stabilizer

Concentrated

.1 mL Concentrate

.5 mL Concentrate

1 mL Concentrate

- Cost effective solution
- Compatible with biotin or polymer based detection systems
- Can be optimized to meet the needs of each laboratory
- Concentrated antibodies diluted in proprietary protein blocker/stabilizer

Ask us about samples!

Manufactured and developed in accordance with FDA QSR 21 CFR Part 820 cGMP and ISO 13485:2003 standards. These guidelines enable us to produce IVD product that meets the highest in vitro diagnostic standards.

BUYING GUIDE



CANCER
DIAGNOSTICS, INC.

Rabbit & Mouse Antibodies for Immunohistochemistry

Higher Affinity • Higher Sensitivity • Higher Specificity



Cancer Diagnostics Inc.

Contact Information

Visit us online

4300 Emperor Blvd-400
Durham, North Carolina 27703

Toll Free: (877) 846 5393
Fax: (877) 817 1716

cancerdiagnostics.com

©2017 Cancer Diagnostics, Inc. All rights reserved. Printed in the USA

Quick-reference supplement to IHC Reference Guide

Antibodies (alphabetical)

ANTIBODY	ANTIBODY TYPE	CLONE	ANTIBODY	ANTIBODY TYPE	CLONE
Alpha-1-Antichymotrypsin	RPab	N/A	CD5	RMab	RED1
Alpha-1-Antitrypsin	RPab	N/A	CD6	MMab	BSB-54
ACTH	MMab	BSB-25	CD7	MMab	LP15
Actin, Muscle Specific	MMab	HHF35	CD7	RMab	EP132
Actin, Smooth Muscle	MMab	BSB-15	CD8	MMab	C8/144B
■ Adenovirus	MMab	20/11 & 2/6	CD8	RMab	EP334
Adipophilin/ADRP	MMab	BSB91	CD10	MMab	56C6
ALDH1A1	RMab	EP168	CD10	RMab	EP195
ALK-1	RMab	EP302	CD11b	RMab	EP45
ALK-1	RMab	RBT-ALK1	CD11c	RMab	EP157
Alpha-Fetoprotein	MMab	BSB-23	CD13	MMab	38C12
Alpha-Fetoprotein	RMab	EP209	CD13	RMab	EP117
* Alpha Synuclein	MMab	BSB-114	CD14	MMab	7
AMACRacemase/P504S	RMab	13H4	CD14	RMab	EP128
Amyloid A	RMab	EP335	CD15	MMab	MMA
* Amyloid Beta	RMab	RBT-A4	CD15	RMab	EP272
Androgen Receptor	MMab	BSB-4 (AR-D12)	* CD16	RMab	EP364
Annexin A1	MMab	BSB-95	CD19	MMab	BSB-97
Arginase-1	RMab	EP261	CD19	RMab	EP169
* ATRX	MMab	BSB-108	CD20	MMab	L26
■ B7H3/CD276	RMab	RBT-B7H3	CD21	RMab	EP64
* BAP1	MMab	BSB-109	CD23	MMab	1B12
Bax	RMab	E63	CD23	RMab	EP75
BCA-225	MMab	Cu-118	CD25	MMab	4C9
bcl-2	MMab	BSB-5	CD25	RMab	RBT-CD25
bcl-2	RMab	EP36	CD30	MMab	Ber-H2
* bcl-6	MMab	BSB-26	CD31	MMab	1A10
bcl-6	RMab	EP278	* CD33	RMab	RBT-CD33
bcl-6	RMab	RBT-bc16	CD34	MMab	QBEnd/10
bcl-10	MMab	BSB-22	CD34	RMab	EP88
Bclx	RMab	EP94	CD35	MMab	RLB25
Beta-Catenin	MMab	14	CD35	RMab	EP197
Beta-Catenin	RMab	EP35	CD38	MMab	SPC32
BG8 Lewis Y	MMab	F3	CD38	RMab	EP135
BOB.1	RMab	EP114	CD41/Integrin alpha 11b	RMab	EP178
* Brachyury	RPab	Polyclonal	CD43	MMab	MT1
■ BRAF V600E	RMab	RM8	CD44	MMab	BSB-12
c-MET/HGFR	RMab	EP1454Y	CD45	MMab	2B11 & PD7/26
c-Myc	MMab	9E10	CD45R	MMab	MB1
c-Myc	RMab	EP121	CD45RA	MMab	4KB5
c-Myc	RPab	N/A	CD45RO	MMab	UCHL-1
CA-125	MMab	OC125	CD56	MMab	123C3.D5
CA-125	RMab	EP48	CD57	MMab	BSB-10
C3d	RPab	Polyclonal	CD61	MMab	2f2
C4d	RPab	Polyclonal	CD63	MMab	NK1/C3
C4d	RMab	EP273	CD68	MMab	BSB-8
Cadherin-6	RMab	EP217	CD68	MMab	KP-1
Cadherin 17/Li-Cadherin	RMab	EP86	CD71	MMab	10F11
Calcitonin	RPab	N/A	CD74	MMab	LN2
Calcitonin	RMab	EP92	CD75	MMab	LN1
Caldesmon	MMab	BSB-19	CD79a	MMab	JCB117
Calponin	MMab	BSB-20	CD99	MMab	BSB-9
Calretinin	RMab	EP1798	CD103/ITGAE	RMab	EP206
Carbonic Anhydrase 9	RMab	EP161	CD105/Endoglin	RPab	Polyclonal
* Caveolin 1	RMab	EP353	CD105	RMab	EP274
CA15-3	RMab	DF3	CD117	RMab	EP10
CA 19-9	MMab	121SLE	CD123, IL-3RA	MMab	BSB-59
CD1a	RMab	EP80	CD138	MMab	B-A38
CD2	MMab	AB75	CD138	RMab	EP201
CD3 Epsilon	RMab	RBT-CD3e	CD163	MMab	10D6
CD3	RMab	RBT-CD3	CD163	RMab	EP324
CD4	RMab	RBT-CD4	CDK2	RMab	RBT-CDK2
CD5	RMab	RBT-CD5	CDK4	RMab	EP180

QUICK GUIDE REFERENCE

* NEW ANTIBODIES ■ ASR ■ RUO

PLEASE NOTE:

All antibodies are IVD unless otherwise specified.

Antibodies (alphabetical)

ANTIBODY	ANTIBODY TYPE	CLONE	ANTIBODY	ANTIBODY TYPE	CLONE
CDX2	RMab	EP25	EPCAM/Epithelial Specific Antigen	MMab	MOC-31
CEA	MMab	BSB-13	■ Epstein Barr Virus, LMP-1	MMab	CS1-4
CEA	RPab	Polyclonal	ERCC1	RMab	EP219
Chromagrain A	MMab	LK2H10	ERG	RMab	EP1111
Claudin-1	RPab	Polyclonal	■ Estrogen Receptor	MMab	BSB-1
Claudin-5	RMab	EP224	■ Estrogen Receptor	RMab	EP1
Clusterin/Apolipoprotein J	RMab	EP181	■ Estrogen Receptor	RMab	RBT11
Collagen Type IV	MMab	CIV22	Factor VIII-Related Antigen	RPab	N/A
COX-2	RMab	EP293	Factor XIIIa	RMab	EP292
COX-2	RMab	RBT-COX2	Fascin	MMab	BSB-36
■ CTLA-4/CD152	MMab	BSB-88	Fli-1	MMab	G146-222
Cyclin B1	RMab	RBT-B1	Follicular Dendritic Cell	MMab	CAN.42
Cyclin D1	RMab	EP12	FOXA1/HNF-3A	RPab	Polyclonal
Cyclin D1	RMab	RBT14	FOXA1/HNF-3A	RMab	EP277
Cyclin E1	RMab	EP126	FOXP1	RMab	EP290
Cytokeratin 4	RMab	EP4	FOXP1	RMab	EP137
Cytokeratin 5	RMab	EP24	FOXP3	RPab	Polyclonal
Cytokeratin 5 & 6	RMab	D5/16B4	FOXP3	RMab	EP340
Cytokeratin 5 & 6	RMab	EP24 & EP67	FSH	MMab	BSB-55
Cytokeratin 5 & 14	RMab	EP24 & EP61	Galectin-3	MMab	9C4
Cytokeratin 5 & ERG	RMab	EP24/EP111	Gastrin	RPab	N/A
Cytokeratin 5 & 6 & ERG	RMab	EP24/EP67/EP111	GATA 3	MMab	L50-823
Cytokeratin 5 & 14	RMab	EP24/EP61	* GATA 3	RMab	EP368
Cytokeratin 6	RMab	EP67	GCDFP-15	MMab	23A3
Cytokeratin 6 & CDKX2	RMab	EP16 & EP25	GCDFP-15	RMab	EP95
Cytokeratin 7	MMab	OV-TL 12/30	GFAP	MMab	G-A-5
Cytokeratin 7	RMab	EP16	GFAP	RMab	EP13
Cytokeratin 7 & CDX2	RMab	EP16 & EP25	* GH	MMab	BSB-99
Cytokeratin 8	RMab	EP17	GH	RPab	N/A
Cytokeratin 8 & 18	MMab	B22.1/B23.1	GH	RMab	E267
Cytokeratin 8 & 18	RMab	EP17/EP30	* Glucagon	MMab	BSB-111
Cytokeratin 10	RMab	EP97	Glucagon	RPab	Polyclonal
Cytokeratin 14	RMab	EP61	Glucagon	RMab	EP74
Cytokeratin 14	MMab	LL002	GLUT1	RMab	EP141
Cytokeratin 15	RMab	EP14	Glutamine Synthase	MMab	GS-6
Cytokeratin 16	RMab	EP297	Glycophorin-A	MMab	GA-R2
Cytokeratin 17	MMab	BSB-33	Glypican-3	MMab	1G12
Cytokeratin 17	RMab	EP98	Granzyme B	RPab	Polyclonal
Cytokeratin 18	RMab	EP30	Granzyme B	RMab	EP230
Cytokeratin 19	MMab	BSB-34	hCG	MMab	BSB-38
Cytokeratin 19	RMab	EP72	* HE4	RMab	EP370
Cytokeratin 20	MMab	Ks20.8	■ Helicobacter pylori	MMab	BSB-37
Cytokeratin 20	RMab	EP23	■ Helicobacter pylori	RPab	Polyclonal
Cytokeratin 35BH11	MMab	35betaH11	■ Helicobacter pylori	RMab	EP279
Cytokeratin Cocktail AE1&AE3	MMab	AE1/AE3	Hemaglobin A	RMab	EP124
Cytokeratin HMW 34BE12	MMab	34betaE12	■ Hepatitis B Virus Core	RPab	Polyclonal
Cytokeratin HMW/AE3	MMab	AE3	■ Hepatitis B Virus Surface Antigen	MMab	T9
Cytokeratin LMW CAM5.2	MMab	CAM5.2	Hepatocyte Specific Antigen/ Hep Par 1	MMab	OCH1E5
Cytokeratin LMW/AE1	MMab	AE1	■ HER-2 neu	MMab	BSB-3
Cytokeratin OSCAR	MMab	OSCAR	■ HER-2 neu	RMab	EP3
■ Cytomegalovirus	MMab	8B1.2, 1G5.2 & 2D4.2	■ HER-2 neu	RMab	RBT-HER2
Desmin	MMab	D33	■ HER-2 neu Phospho	RMab	EP123
Desmin	RMab	EP15	HER-3/c-erbB-3	RMab	RBT-HER3
Desmoglein-3	MMab	BSB-61	■ Herpes Simplex Virus I	RPab	Polyclonal
Desmoglein-3	RMab	EP306	■ Herpes Simplex Virus I	MMab	10A3
DOG1	RMab	EP332	■ Herpes Simplex Virus II	RPab	Polyclonal
DOG1	RMab	RBT-DOG1	■ Herpes Simplex Virus I & II	RPab	Polyclonal
E-Cadherin	RMab	EP6	hGAL.GCET2	RMab	EP316
E2F4	RMab	EP252	■ HHV-8	MMab	13B10
■ EGFR	MMab	31G7	HIF-1a	RMab	EP118
■ EGFR Phospho	RMab	EP11	Histone H3 Phospho	RPab	Polyclonal
EMA	MMab	E29	Histone H3 Phospho	RMab	EP233
EpCAM/Epithelial Specific Antigen	MMab	BerEP4	HLA-DR alpha chain	RMab	EP96

QUICK GUIDE REFERENCE

* NEW ANTIBODIES ■ ASR ■ RUO

PLEASE NOTE:

All antibodies are IVD unless otherwise specified.

Antibodies (alphabetical)

ANTIBODY	ANTIBODY TYPE	CLONE
HLA-DRB1 beta chain	RMab	EP191
hPL	RMab	EP241
hPL	RPab	Polyclonal
■ HPV	MMab	BSB-66
■ HPV-16	MMab	CAMVIR-1
HSP-27	MMab	G3.1
IgA	MMab	BSB-39
IgD	RPab	Polyclonal
IgD	RMab	EP173
IgG	MMab	BSB-40
IgG4	MMab	BSB-96
IgG4	RMab	EP138
IgM	MMab	BSB-41
IMP-3/1GF2BP3	RMab	EP286
Inhibin Alpha	MMab	R1
* Inhibin Alpha	RMab	EP378
INI-1	MMab	25
iNOS	RMab	RBT-iNOS
Insulin	MMab	BSB-42
Insulin	RMab	EP125
Islet-1/ISL1	RMab	EP283
Kappa Light Chains	MMab	BSB-58
Ki-67	RMab	EP5
Ksp-Cadherin	MMab	4H6/F9
* LAG-3	RMab	EP294
Lambda	MMab	BSB-16
Langerin	MMab	12D6
* Langerin/CD2-7	RMab	EP349
* LEF-1	RMab	EP310
LH	MMab	BSB-16
Macrophage/HAM-56	MMab	HAM-56
Mammaglobin	RMab	EP249
MART-1/Melan-A, M2-7C10	MMab	M2-7C10
MART-1/Melan-A, A103	MMab	A103
Maspin	MMab	BSB-92
MCM2	RMab	RBT-MCM2
MCM3	RMab	EP202
MCM5	RMab	RBT-MCM5
MDM2	MMab	BSB-64
MDR-1	MMab	JSB-1
MDR-1	RMab	EP271
Melanoma/KBA.62	MMab	KBA6.2
Melanoma/PNL2	MMab	PNL2
Melanoma Cocktail	MMab	HMB-45, A103 & BSB-6
Melanosome HMB-45	MMab	HMB-45
* Mesothelial	MMab	HBME-1
Mesothelial	RMab	EP140
MiTF	MMab	C5/D5
MLH1	MMab	G168-728
MMP-9	RMab	EP127
MSH2	MMab	G219-1129
MSH2	RMab	RBT-MSH2
MSH6	MMab	44
MSH6	RMab	EP49
MUC1	MMab	BSB-44
MUC1	RMab	EP85
MUC2	MMab	BSB-45
MUC2	RMab	EP187
MUC4	MMab	8G7
MUC4	RMab	EP256
MUC5AC	MMab	CLH2
MUC6	MMab	CLH5
MUM-1	RMab	EP190

ANTIBODY	ANTIBODY TYPE	CLONE
■ Mycobacterium Tuberculosis	RPab	Polyclonal
Myelin Basic Protein	RPab	N/A
Myelin Basic Protein	RMab	EP207
Myeloperoxidase	RPab	N/A
Myeloperoxidase	RMab	EP151
MyoD1	RMab	EP212
Myogenin	MMab	F5D
Myogenin	RMab	EP162
* Myoglobin	MMab	BSB-104
Myoglobin	RPab	N/A
Myoglobin	RMab	EP87
Myosin, Smooth Muscle Heavy Chain	MMab	BSB-17
* Napsin A	MMab	BSB-112
Napsin A	RMab	EP205
Nestin	RMab	EP287
NeuN	MMab	A60
Neuroblastoma	RMab	NB84a
Neutrophil Elastase	RMab	EP223
Neurofilament	MMab	2F11
Neurofilament	RMab	EP79
NGFR	MMab	BSB-18
NKX2.2	RMab	EP336
NKX3.1	RMab	EP356
NRAS (Q61R)	RMab	RBT-NRAS
NSE	MMab	BSB-94
OCT-2	RMab	EP115
OCT-4	RMab	EP143
OLIG2	RMab	EP112
Osteonectin/SPARC	MMab	BSB-93
■ OX40/CD134	MMab	BSB-90
P21	MMab	DCS-60.2
P27	MMab	SX53G8
P40	RMab	ZR8
P53	MMab	DO7
p57	MMab	KP10
P63	RMab	EP174
P120 Catenin	RMab	EP66
Parafibromin	MMab	BSB-50
Parathyroid Hormone/PTH	MMab	BSB-24
* Parvalbumin	RMab	EP300
■ Parvovirus	MMab	R92F6
PAX-2	RMab	EP235
PAX-5	RMab	RBT-PAX-5
PAX-6	RMab	EP341
PAX-8	RMab	EP298
PAX-8	RMab	ZR-1
PD-1/CD279	MMab	NAT-105
PD-1/CD279	RMab	EP239
PD-L1/CD274	RMab	RBT-PDL1
PDGFR-B	RMab	RBT-PDGFRB
PDX1	RMab	EP139
Perforin	MMab	5B10
PGP 9.5	MMab	BSB-46
PLAP	MMab	BSB-47
PLAP	RMab	EP194
PMS2	RMab	EP51
■ Pneumocystis jirovecii	MMab	3F6
Podoplanin/d2-40	MMab	D2-40
■ Progesterone Receptor	MMab	BSB-2
■ Progesterone Receptor	RMab	RBT22
■ Progesterone Receptor	RMab	EP2
Prolactin	MMab	PRL02
Prolactin	RMab	EP193

QUICK GUIDE REFERENCE

* NEW ANTIBODIES ■ ASR ■ RUO

PLEASE NOTE:

All antibodies are IVD unless otherwise specified.

Antibodies (alphabetical)

ANTIBODY	ANTIBODY TYPE	CLONE
Prostein/P501S	RMab	ZR-9
PSA	MMab	BSB-7
PSA	RMab	RBT-PSA
PSAP	MMab	PASE/4LJ
PSAP	RMab	EP53
PSMA	RMab	EP192
PSP94/MSMB	RMab	EP203
PTEN	MMab	6H2.1
PTEN	RMab	RBT-PTEN
PTH	MMab	BSB-24
PU.1	RMab	EP18
Retinoblastoma	MMab	1F8
S100	MMab	4C4.9
S100 Beta	RMab	EP32
S100A1	RMab	EP184
S100A6	RMab	EP313
S100A8/MRP8	RMab	EP90
S100A9	RMab	EP185
S100P	RMab	EP186
SALL4	MMab	6E3
SALL4	RMab	EP299
SATB2f	RMab	EP281
SMAD4/DPC4	MMab	BSB-63
* SMAD4/DPC4	RMab	RBT-SMAD4
Smoothelin	MMab	R4A
* Somatostatin	MMab	BSB-113
Somatostatin	RPab	N/A
Somatostatin	RMab	EP130
SOX-2	RMab	EP103
SOX-9	RMab	EP317
SOX-10	MMab	BSB-62
SOX-10	RMab	EP268
SOX-11	MMab	CL0142
Spectrin	MMab	RBC2/3D5
Spectrin	RMab	EP251
* STAT6	RMab	EP325
STAT6	RPab	Polyclonal
Stathmin	RMab	EP247
Survivin	RMab	EP119
■ SV40	MMab	Pab101
Synaptophysin	RPab	Polyclonal
Synaptophysin	RMab	EP158
T-Bet/TBX-21	RMab	EP263
TAG-72	MMab	BSB-21
* Tau	MMab	BSB-115
TCL1	RMab	EP105
TCR Beta F1	MMab	8A3
TdT	RPab	N/A
TdT	RMab	EP266
TdT	RMab	RBT-TdT
TFE3	RPab	Polyclonal
TFE3	RMab	EP285
Thrombomodulin/CD141	RMab	EP175
Thyroglobulin	MMab	BSB-49
Thyroglobulin	MMab	2H11/6E1
Thyroglobulin	RMab	EP250
Thyroid Peroxidase	RMab	EP159
TIA-1	MMab	TIA-1
Topoisomerase IIa	RMab	RBT-Topo2a
Toxoplasma gondii	RPab	N/A
TRAcP	MMab	9C5
Treponema Pallidum	RPab	Polyclonal
Tryptase	MMab	G3

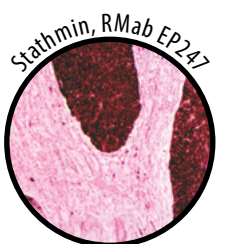
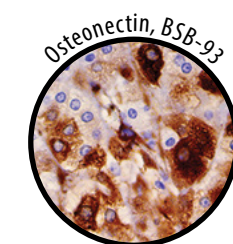
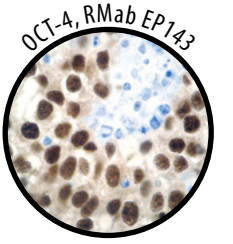
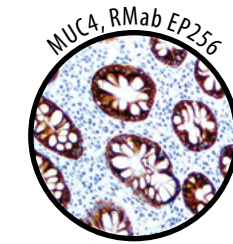
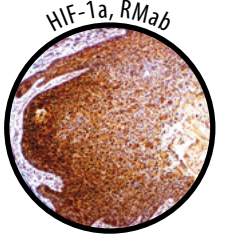
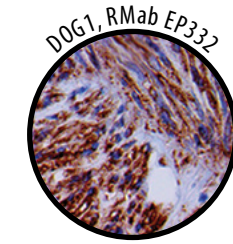
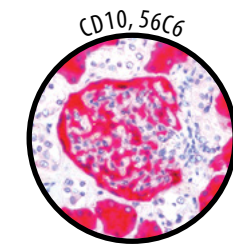
QUICK GUIDE REFERENCE

* NEW ANTIBODIES ■ ASR ■ RUO

PLEASE NOTE:

All antibodies are IVD unless otherwise specified.

ANTIBODY	ANTIBODY TYPE	CLONE
Tryptase	RMab	EP259
TSH	MMab	BSB-56
TSH	RMab	EP254
TTF-1	MMab	8G7G3/1
Tyrosinase	MMab	BSB-6
Uroplakin III	RPab	Polyclonal
Uroplakin III	RMab	EP321
Varicella Zoster Virus	MMab	SG1-1, SG1-SG4, NCP & IE62
VEGF	RMab	RBT-VEGF
Villin	MMab	CWVWB1
Villin	RMab	EP163
Vimentin	MMab	V9
Vimentin	RMab	EP21
WT-1	MMab	6F-H2
Zap-70	MMab	2F3.2



Breast Cancer Antibodies

ANTIBODY	ANTIBODY TYPE	CLONE
Actin, Smooth Muscle	MMab	BSB-15
ALDH1A1	RMab	EP168
Androgen Receptor	MMab	BSB-4 (AR-D12)
■ B7H3/CD276	RMab	RBT-B7H3
Bax	RMab	E63
BCA-225	MMab	Cu-118
bcl-2	MMab	BSB-5
bcl-2	RMab	EP36
Bclx	RMab	EP94
Beta-Catenin	MMab	14
Beta-Catenin	RMab	EP35
c-MET/HGFR	RMab	EP1454Y
CA-125	MMab	OC125
CA-125	RMab	EP48
Caldesmon	MMab	BSB-19
Calponin	MMab	BSB-20
CA15-3	RMab	DF3
CD10	MMab	56C6
CD10	RMab	EP195
CD31	MMab	1A10
CD44	MMab	BSB-12
CD45RA	MMab	4KB5
CD68	MMab	BSB-8
CD68	MMab	KP-1
CD105/Endoglin	RPab	Polyclonal
CD105	RMab	EP274
CDK2	RMab	RBT-CDK2
Claudin-1	RPab	Polyclonal
Claudin-5	RMab	EP224
Clusterin/Apolipoprotein J	RMab	EP181
Collagen Type IV	MMab	CIV22
Cyclin B1	RMab	RBT-B1
Cyclin D1	RMab	RBT14
Cyclin E1	RMab	EP126
Cytokeratin 5	RMab	EP24
Cytokeratin 5 & 6	RMab	DS/16B4
Cytokeratin 5 & 6	RMab	EP24 & EP67
Cytokeratin 5 & 14	RMab	EP24 & EP61
Cytokeratin 7	MMab	OV-TL 12/30
Cytokeratin 7	RMab	EP16
Cytokeratin 8	RMab	EP17
Cytokeratin 14	RMab	EP61
Cytokeratin 15	RMab	EP14
Cytokeratin 17	MMab	BSB-33
Cytokeratin 17	RMab	EP98
Cytokeratin 18	RMab	EP30
Cytokeratin 19	MMab	BSB-34
Cytokeratin 19	RMab	EP72
Cytokeratin 35BH11	MMab	35betaH11
Cytokeratin Cocktail AE1&AE3	MMab	AE1/AE3
Cytokeratin LMW/AE1	MMab	AE1
Cytokeratin OSCAR	MMab	OSCAR
E-Cadherin	RMab	EP6
■ EGFR	MMab	31G7
■ EGFR Phospho	RMab	EP11
EMA	MMab	E29
■ Estrogen Receptor	MMab	BSB-1
■ Estrogen Receptor	RMab	RBT11
FOXA1/HNF-3A	RPab	Polyclonal
FOXA1/HNF-3A	RMab	EP277
FOXP1	RMab	EP137
FOXP3	RPab	Polyclonal

Breast Cancer Antibodies

ANTIBODY	ANTIBODY TYPE	CLONE
FOXP3	RMab	EP340
GATA 3	MMab	L50-823
GATA 3	RMab	EP368
GCDFP-15	MMab	23A3
GCDFP-15	RMab	EP95
■ HER-2 neu	MMab	BSB-3
■ HER-2 neu	MMab	EP3
■ HER-2 neu	RMab	RBT-HER2
■ HER-2 neu Phospho	RMab	EP123
HLA-DR alpha chain	RMab	EP96
HLA-DRB1 beta chain	RMab	EP191
HSP-27	MMab	G3.1
Ki-67	RMab	EP5
Mammaglobin	RMab	EP249
Maspin	MMab	BSB-92
MCM3	RMab	EP202
MDM2	MMab	BSB-64
MDR-1	MMab	JSB-1
MDR-1	RMab	EP271
MMP-9	RMab	EP127
MUC1	MMab	BSB-44
MUC1	RMab	EP85
Myosin, Smooth Muscle Heavy Chain	MMab	BSB-17
Nestin	RMab	EP287
NGFR	MMab	BSB-18
NKX3.1	RMab	EP356
Osteonectin/SPARC	MMab	BSB-93
P27	MMab	SX53G8
P40	RMab	ZR8
P53	MMab	DO7
P63	RMab	EP174
P120 Catenin	RMab	EP66
■ Progesterone Receptor	MMab	BSB-2
■ Progesterone Receptor	RMab	RBT22
■ Progesterone Receptor	RMab	EP2
PTEN	MMab	6H2.1
PTEN	RMab	RBT-PTEN
S100A8/MRP8	RMab	EP90
S100A9	RMab	EP185
SALL4	MMab	6E3
SALL4	RMab	EP299
Survivin	RMab	EP119
TAG-72	MMab	BSB-21
Topoisomerase IIa	RMab	RBT-Topo2a

Carcinoma Unknown Primary Site

ANTIBODY	ANTIBODY TYPE	CLONE
Cadherin 17/Li-Cadherin	RMab	EP86
CDX2	RMab	EP25
CEA	MMab	BSB-13
CEA	RPab	Polyclonal
Cytokeratin 5	RMab	EP24
Cytokeratin 7	MMab	OV-TL 12/30
Cytokeratin 7	RMab	EP16
Cytokeratin 17	MMab	BSB-33
Cytokeratin 17	RMab	EP98
Cytokeratin Cocktail AE1&AE3	MMab	AE1/AE3
Cytokeratin LMW CAM5.2	MMab	CAM5.2
Cytokeratin OSCAR	MMab	OSCAR
■ Estrogen Receptor	MMab	BSB-1

QUICK GUIDE REFERENCE

* NEW ANTIBODIES ■ ASR ■ RUO

PLEASE NOTE:

All antibodies are IVD unless otherwise specified.

Carcinoma Unknown Primary Site cont.

ANTIBODY	ANTIBODY TYPE	CLONE
■ Estrogen Receptor	RMab	RBT11
GATA 3	MMab	L50-823
* GATA 3	RMab	EP368
GCDFP-15	RMab	EP95
Hepatocyte Specific Antigen/ Hep Par 1	MMab	OCH1E5
Mammaglobin	RMab	EP249
* Napsin A	MMab	BSB-112
NKX3.1	RMab	EP356
P40	RMab	ZR8
P63	RMab	EP174
PAX-6	RMab	EP341
PAX-8	RMab	EP298
PAX-8	RMab	ZR-1
■ Progesterone Receptor	MMab	BSB-2
■ Progesterone Receptor	RMab	RBT22
■ Progesterone Receptor	RMab	EP2
Prostein/P501S	RMab	ZR-9
PSA	MMab	BSB-7
PSA	RMab	RBT-PSA
S100	MMab	4C4.9
Synaptophysin	RPab	Polyclonal
Synaptophysin	RMab	EP158
TFE3	RMab	EP285
TTF-1	MMab	8G7G3/1
WT-1	MMab	6F-H2

Cervical Antibodies

ANTIBODY	ANTIBODY TYPE	CLONE
CA-125	MMab	OC125
CA-125	RMab	EP48
CD45RA	MMab	4KB5
CD117	RMab	EP10
Clusterin/Apolipoprotein J	RMab	EP181
Cyclin B1	RMab	RBT-B1
Cyclin E1	RMab	EP126
Cytokeratin 16	RMab	EP297
Cytokeratin 17	MMab	BSB-33
Cytokeratin 17	RMab	EP98
FOXO1	RMab	EP290
HIF-1a	RMab	EP118
■ HPV	MMab	BSB-66
■ HPV-16	MMab	CAMVIR-1
HSP-27	MMab	G3.1
IMP-3/1GF2BP3	RMab	EP286
Ki-67	RMab	EP5
MCM2	RMab	RBT-MCM2
MCM3	RMab	EP202
MCM5	RMab	RBT-MCM5
MUC4	MMab	8G7
MUC4	RMab	EP256
P63	RMab	EP174
Stathmin	RMab	EP247
Topoisomerase IIa	RMab	RBT-Topo2a
■ VEGF	RMab	RBT-VEGF

QUICK GUIDE REFERENCE

* NEW ANTIBODIES ■ ASR ■ RUO

PLEASE NOTE:

All antibodies are IVD unless otherwise specified.

Colon & G.I. Antibodies

ANTIBODY	ANTIBODY TYPE	CLONE
Actin, Smooth Muscle	MMab	BSB-15
ALDH1A1	RMab	EP168
Beta-Catenin	MMab	14
Beta-Catenin	RMab	EP35
■ BRAF V600E	RMab	RM8
c-MET/HGFR	RMab	EP1454Y
Cadherin 17/Li-Cadherin	RMab	EP86
Carbonic Anhydrase 9	RMab	EP161
CA 19-9	MMab	121SLE
CD34	MMab	QBEnd/10
CD34	RMab	EP88
CD44	MMab	BSB-12
CD45RA	MMab	4KB5
CD45RO	MMab	UCHL-1
CD103/ITGAE	RMab	EP206
CD105/Endoglin	RPab	Polyclonal
CD105	RMab	EP274
CD117	RMab	EP10
CDX2	RMab	EP25
CEA	MMab	BSB-13
CEA	RPab	Polyclonal
CEA	MMab	LK2H10
Chromogranin A	MMab	Polyclonal
Claudin-1	RPab	Polyclonal
COX-2	RMab	EP293
COX-2	RMab	RBT-COX2
Cyclin E1	RMab	EP126
Cytokeratin 4	RMab	EP4
Cytokeratin 7	MMab	OV-TL 12/30
Cytokeratin 7	RMab	EP16
Cytokeratin 7 & CDX2	RMab	EP16 & EP25
Cytokeratin 8 & 18	RMab	EP17/EP30
Cytokeratin 18	RMab	EP30
Cytokeratin 19	MMab	BSB-34
Cytokeratin 19	RMab	EP72
Cytokeratin 20	MMab	Ks20.8
Cytokeratin 20	RMab	EP23
Cytokeratin 35BH11	MMab	35betaH11
Cytokeratin LMW CAM5.2	MMab	CAM5.2
DOG1	RMab	EP332
DOG1	RMab	RBT-DOG1
■ EGFR	MMab	31G7
■ EGFR Phospho	RMab	EP11
EpCAM/Epithelial Specific Antigen	MMab	BerEP4
EPCAM/Epithelial Specific Antigen	MMab	MOC-31
■ Helicobacter pylori	MMab	BSB-37
■ Helicobacter pylori	RPab	Polyclonal
■ HER-2 neu	MMab	BSB-3
■ HER-2 neu	RMab	EP3
■ HER-2 neu	RMab	RBT-HER2
■ HER-2 neu Phospho	RMab	EP123
HLA-DRB1 beta chain	RMab	EP191
IgG4	MMab	BSB-96
IMP-3/1GF2BP3	RMab	EP286
Ki-67	RMab	EP5
* LEF-1	RMab	EP310
Maspin	MMab	BSB-92
MLH1	MMab	G168-728
MMP-9	RMab	EP127
MSH2	MMab	G219-1129
MSH2	RMab	RBT-MSH2
MSH6	MMab	44
MUC1	MMab	BSB-44

Colon & G.I. Antibodies Cont.

ANTIBODY	ANTIBODY TYPE	CLONE
MUC1	RMab	EP85
MUC2	MMab	BSB-45
MUC2	RMab	EP187
MUC4	MMab	8G7
MUC4	RMab	EP256
MUC5AC	MMab	CLH2
MUC6	MMab	CLH5
Osteonectin/SPARC	MMab	BSB-93
P53	MMab	DO7
PAX-5	RMab	RBT-PAX-5
PAX-6	RMab	EP341
PDX1	RMab	EP139
PGP 9.5	MMab	BSB-46
PMS2	RMab	EP51
S100A6	RMab	EP313
S100P	RMab	EP186
SALL4	MMab	6E3
SALL4	RMab	EP299
SATB2f	RMab	EP281
SMAD4/DPC4	MMab	BSB-63
* SMAD4/DPC4	RMab	RBT-SMAD4
* Somatostatin	MMab	BSB-113
Somatostatin	RMab	EP130
SOX-9	RMab	EP317
Synaptophysin	RPab	Polyclonal
Synaptophysin	RMab	EP158
Villin	MMab	CWVWB1
Villin	RMab	EP163

Endometrial & Genital Antibodies

ANTIBODY	ANTIBODY TYPE	CLONE
bcl-2	MMab	BSB-5
bcl-2	RMab	EP36
CD10	MMab	56C6
CD10	RMab	EP195
CD44	MMab	BSB-12
Cyclin D1	RMab	EP12
Cyclin D1	RMab	RBT14
Cyclin E1	RMab	EP126
■ Estrogen Receptor	MMab	BSB-1
■ Estrogen Receptor	RMab	EP1
■ Estrogen Receptor	RMab	RBT1
hPL	RMab	EP241
hPL	RPab	Polyclonal
IMP-3/1GF2BP3	RMab	EP286
* Inhibin Alpha	RMab	EP378
MUC4	RMab	EP256
P21	MMab	DCS-60.2
P53	MMab	DO7
■ Progesterone Receptor	MMab	BSB-2
■ Progesterone Receptor	RMab	RBT22
■ Progesterone Receptor	RMab	EP2
PTEN	MMab	6H2.1
PTEN	RMab	RBT-PTEN
Retinoblastoma	MMab	1F8
SALL4	MMab	6E3
SALL4	RMab	EP299
Stathmin	RMab	EP247
Vimentin	MMab	V9
Vimentin	RMab	EP21

Endothelial

ANTIBODY	ANTIBODY TYPE	CLONE
ALDH1A1	RMab	EP168
CD31	MMab	1A10
CD34	MMab	QBEnd/10
CD34	RMab	EP88
CD105/Endoglin	RPab	Polyclonal
CD105	RMab	EP274
Claudin-5	RMab	EP224
ERG	RMab	EP1111
Fli-1	MMab	G146-222
Podoplanin/d2-40	MMab	D2-40
■ VEGF	RMab	RBT-VEGF

Gall Bladder + Pancreatic

ANTIBODY	ANTIBODY TYPE	CLONE
■ B7H3/CD276	RMab	RBT-B7H3
* bcl-6	MMab	BSB-26
bcl-6	RMab	EP278
bcl-10	MMab	BSB-22
Beta-Catenin	RMab	EP35
Cadherin 17/Li-Cadherin	RMab	EP86
CA 19-9	MMab	121SLE
CD10	MMab	56C6
CDX2	RMab	EP25
CEA	MMab	BSB-13
CEA	RPab	Polyclonal
Chromogranin A	MMab	LK2H10
Collagen Type IV	MMab	CIV22
Cytokeratin 17	MMab	BSB-33
Cytokeratin 17	RMab	EP98
Cytokeratin 35BH11	MMab	35betaH11
Cytokeratin LMW CAM5.2	MMab	CAM5.2
Gastrin	RPab	N/A
* Glucagon	MMab	BSB-111
Glucagon	RPab	Polyclonal
Glucagon	RMab	EP74
* HE4	RMab	EP370
IgG4	MMab	BSB-96
IgG4	RMab	EP138
Insulin	MMab	BSB-42
Insulin	RMab	EP125
Islet-1/ISL1	RMab	EP283
Maspin	MMab	BSB-92
* Mesothelial	MMab	HBME-1
Mesothelial	RMab	EP140
MUC4	MMab	8G7
MUC4	RMab	EP256
Osteonectin/SPARC	MMab	BSB-93
PAX-6	RMab	EP341
PDX1	RMab	EP139
PGP 9.5	MMab	BSB-46
S100A6	RMab	EP313
S100A8/MRP8	RMab	EP90
S100P	RMab	EP186
SMAD4/DPC4	MMab	BSB-63
* SMAD4/DPC4	RMab	RBT-SMAD4
* Somatostatin	MMab	BSB-113
Somatostatin	RPab	N/A
Somatostatin	RMab	EPI30
SOX-9	RMab	EP317
Synaptophysin	RMab	EP158

Gall Bladder + Pancreatic Cont.

ANTIBODY	ANTIBODY TYPE	CLONE
Synaptophysin	RPab	Polyclonal
TAG-72	MMab	BSB-21
Villin	MMab	CWVWB1
Villin	RMab	EP163

Germ Cell Tumor

ANTIBODY	ANTIBODY TYPE	CLONE
Alpha-Fetaprotein	MMab	BSB-23
Alpha-Fetaprotein	RMab	EP209
CD117	RMab	EP10
Cytokeratin Cocktail AE1&AE3	MMab	AE1/AE3
Cytokeratin OSCAR	MMab	OSCAR
FOXP1	RMab	EP137
GCDFP-15	MMab	23A3
Glypican-3	MMab	1G12
hCG	MMab	BSB-38
OCT-4	RMab	EP143
p57	MMab	KP10
PLAP	MMab	BSB-47
PLAP	RMab	EP194
SALL4	MMab	6E3
SALL4	RMab	EP299
SOX-2	RMab	EP103

Gist

ANTIBODY	ANTIBODY TYPE	CLONE
CD34	MMab	QBEnd/10
CD34	RMab	EP88
CD117	RMab	EP10
Desmin	MMab	D33
DOG1	RMab	EP332
DOG1	RMab	RBT-DOG1
S100	MMab	4C4.9
S100 Beta	RMab	EP32

Head & Neck

ANTIBODY	ANTIBODY TYPE	CLONE
Androgen Receptor	MMab	BSB-4 (AR-D12)
Calcitonin	RPab	N/A
Calcitonin	RMab	EP92
Caldesmon	MMab	BSB-19
CD117	RMab	EP10
Cyclin E1	RMab	EP126
Cytokeratin 7	MMab	OV-TL 12/30
Cytokeratin 7	RMab	EP16
Desmoglein-3	MMab	BSB-61
Desmoglein-3	RMab	EP306
DOG1	RMab	EP332
DOG1	RMab	RBT-DOG1
Galectin-3	MMab	9C4
GFAP	MMab	G-A-5
GFAP	RMab	EP13
* HPV	MMab	BSB-66
HSP-27	MMab	G3.1
MCM3	RMab	EP202

Head & Neck Cont.

* Mesothelial	MMab	HBME-1
P63	RMab	EP174
Parathyroid Hormone/PTH	MMab	BSB-24
SOX-10	MMab	BSB-62
SOX-10	RMab	EP268
Thyroglobulin	MMab	BSB-49
Thyroglobulin	MMab	2H11/6E1
Thyroglobulin	RMab	EP250
Thyroid Peroxidase	RMab	EPI59

Hematopoietic

ANTIBODY	ANTIBODY TYPE	CLONE
CD31	MMab	1A10
CD34	MMab	QBEnd/10
CD34	RMab	EP88
CD41/Integrin alpha IIb	RMab	EP178
CD138	MMab	B-A38
CD138	RMab	EP201
Clusterin/Apolipoprotein J	RMab	EP181
Fli-1	MMab	G146-222
Glycophorin-A	MMab	GA-R2
Tryptase	MMab	G3
Tryptase	RMab	EP259

Hodgkin's & NHD Lymphoma

ANTIBODY	ANTIBODY TYPE	CLONE
* bcl-6	MMab	BSB-26
bcl-6	RMab	EP278
bcl-6	RMab	RBT-bcl6
BOB.1	RMab	EP114
CD3 Epsilon	RMab	RBT-CD3e
CD3	RMab	RBT-CD3
CD10	MMab	56C6
CD10	RMab	EP195
CD15	MMab	MMA
CD15	RMab	EP272
CD19	MMab	BSB-97
CD19	RMab	EP169
CD20	MMab	L26
CD21	RMab	EP64
CD23	MMab	1B12
CD23	RMab	EP75
CD30	MMab	Ber-H2
CD45	MMab	2B11 & PD7/26
CD57	MMab	BSB-10
CD79a	MMab	JCB117
Cyclin E1	RMab	EP126
■ Epstein Barr Virus, LMP-1	MMab	CS1-4
Fascin	MMab	BSB-36
FOXO1	RMab	EP290
FOXP3	RPab	Polyclonal
FOXP3	RMab	EP340
Granzyme B	RPab	Polyclonal
Granzyme B	RMab	EP230
hGAL.GCET2	RMab	EP316
IgA	MMab	BSB-39
IgD	RPab	Polyclonal
IgD	RMab	EP173
IgG	MMab	BSB-40
IgM	MMab	BSB-41

QUICK GUIDE REFERENCE

* NEW ANTIBODIES ■ ASR ■ RUQ

PLEASE NOTE:

All antibodies are IVD unless otherwise specified.

QUICK GUIDE REFERENCE

* NEW ANTIBODIES ■ ASR ■ RUQ

PLEASE NOTE:

All antibodies are IVD unless otherwise specified.

Hodgkin's & NHD Lymphoma cont.

ANTIBODY	ANTIBODY TYPE	CLONE
* LAG-3	RMab	EP294
MUM-1	RMab	EP190
OCT-2	RMab	EP115
PAX-5	RMab	RBT-PAX-5
PD-1/CD279	MMab	NAT-105
PD-1/CD279	RMab	EP239
PD-L1/CD274	RMab	RBT-PDL1
PU.1	RMab	EP18
TIA-1	MMab	TIA-1

Immunotherapy

ANTIBODY	ANTIBODY TYPE	CLONE
■ B7H3/CD276	RMab	RBT-B7H3
CD8	MMab	C8/144B
CD8	RMab	EP334
■ CTLA-4/CD152	MMab	BSB-88
FOXP3	RPab	Polyclonal
FOXP3	RMab	EP340
Granzyme B	RPab	Polyclonal
Granzyme B	RMab	EP230
* LAG-3	RMab	EP294
■ OX40/CD134	MMab	BSB-90
PD-1/CD279	MMab	NAT-105
PD-1/CD279	RMab	EP239
PD-L1/CD274	RMab	RBT-PDL1

Infectious Disease

ANTIBODY	ANTIBODY TYPE	CLONE
■ Adenovirus	MMab	20/11 & 2/6
■ Cytomegalovirus	MMab	8B1.2, 1G5.2&2D4.2
■ Epstein Barr Virus, LMP-1	MMab	CS1-4
■ Helicobacter pylori	MMab	BSB-37
■ Helicobacter pylori	RPab	Polyclonal
■ Helicobacter pylori	RMab	EP279
■ Hepatitis B Virus Core	RPab	Polyclonal
■ Hepatitis B Virus Surface Antigen	MMab	T9
■ Herpes Simplex Virus I	RPab	Polyclonal
■ Herpes Simplex Virus I	MMab	10A3
■ Herpes Simplex Virus II	RPab	Polyclonal
■ Herpes Simplex Virus I & II	RPab	Polyclonal
■ HHV-8	MMab	13B10
■ HPV	MMab	BSB-66
■ HPV-16	MMab	CAMVIR-1
■ Mycobacterium Tuberculosis	RPab	Polyclonal
■ Parvovirus	MMab	R92F6
■ Pneumocystis jirovecii	MMab	3F6
■ SV40	MMab	Pab101
■ Toxoplasma gondii	RPab	N/A
■ Treponema Pallidum	RPab	Polyclonal
■ Varicella Zoster Virus	MMab	SG1-1, SG1-SG4, NCP & 1E62

Kidney & Urothelial

ANTIBODY	ANTIBODY TYPE	CLONE
AMACRacemase/P504S	RMab	13H4
Amyloid A	RMab	EP335

Kidney & Urothelial cont.

* BAP1	MMab	BSB-109
c-MET/HGFR	RMab	EP1454Y
C3d	RPab	Polyclonal
C4d	RPab	Polyclonal
C4d	RMab	EP273
Carbonic Anhydrase 9	RMab	EP161
CD10	MMab	56C6
CD10	RMab	EPI95
CD45RO	MMab	UCHL-1
CD57	MMab	BSB-10
CD61	MMab	2f2
CD63	MMab	NKI/C3
CD68	MMab	BSB-8
CD68	MMab	KP-1
CD75	MMab	LN1
CD105/Endoglin	RPab	Polyclonal
CD105	RMab	EP274
CD117	RMab	EP10
Cytokeratin 7	MMab	OV-TL 12/30
Cytokeratin 7	RMab	EP16
Cytokeratin 8 & 18	MMab	B22.1/B23.1
Cytokeratin 8 & 18	RMab	EP17/EP30
Cytokeratin 14	RMab	EP61
Cytokeratin 14	MMab	LL002
Cytokeratin 20	MMab	Ks20.8
Cytokeratin 20	RMab	EP23
Cytokeratin LMW CAM5.2	MMab	CAM5.2
E-Cadherin	RMab	EP6
ERG	RMab	EP1111
* Inhibin Alpha	RMab	EP378
Ksp-Cadherin	MMab	4H6/F9
Myoglobin	RPab	N/A
P63	RMab	EP174
* Parvalbumin	RMab	EP300
PAX-2	RMab	EP235
PAX-8	RMab	EP298
PAX-8	RMab	ZR-1
PD-L1/CD274	RMab	RBT-PDL1
SI00A1	RMab	EP184
SI00A6	RMab	EP313
Smoothelin	MMab	R4A
Survivin	RMab	EP19
TFE3	RPab	Polyclonal
Uroplakin III	RPab	Polyclonal
Uroplakin III	RMab	EP321
Vimentin	MMab	V9
Vimentin	RMab	EP21
WT-1	MMab	6F-H2

Leukemia/Histocytic

ANTIBODY	ANTIBODY TYPE	CLONE
Alpha-1-Antichymotrypsin	RPab	N/A
Alpha-1-Antitrypsin	RPab	N/A
ALDH1A1	RMab	EP168
Annexin A1	MMab	BSB-95
■ BRAF V600E	RMab	RM8
c-Myc	RMab	EP121
c-Myc	RPab	N/A
CD1a	RMab	EP80
CD5	RMab	RBT-CD5
CD5	RMab	RED1
CD7	MMab	LP15
CD7	RMab	EP132
CD8	MMab	C8/144B

Leukemia/Histocytic cont.

CD8	RMab	EP334
CD11b	RMab	EP45
CD11c	RMab	EP157
CD13	MMab	38C12
CD13	RMab	EP117
CD14	MMab	7
CD14	RMab	EP128
CD14	RMab	EP364
* CD16	MMab	BSB-97
CD19	RMab	EP169
CD19	MMab	L26
CD20	MMab	1B12
CD23	MMab	EP75
CD23	RMab	4C9
CD25	MMab	RBT-CD33
CD25	MMab	QBEnd/10
* CD33	MMab	EP88
CD34	MMab	SPC32
CD34	RMab	EP135
CD38	MMab	2B11 & PD7/26
CD38	RMab	123C3.D5
CD45	MMab	2f2
CD56	MMab	BSB-8
CD61	MMab	KP-1
CD68	MMab	10F11
CD68	MMab	LN2
CD71	MMab	JCB117
CD74	MMab	BSB-9
CD79a	RMab	EP206
CD99	RMab	EP10
CD103/ITGAE	MMab	BSB-59
CD117	MMab	10D6
CD123, IL-3RA	RMab	EP324
CD163	RMab	EP292
CD163	MMab	GA-R2
Factor XIIIa	RPab	Polyclonal
Glycophorin-A	RMab	EP230
Granzyme B	RMab	EP124
Granzyme B	MMab	12D6
Hemaglobin A	RMab	EP349
Langerin	MMab	HAM-56
* Langerin/CD2-7	RPab	N/A
Macrophage/HAM-56	RMab	EP151
Myeloperoxidase	RMab	EP223
Myeloperoxidase	RMab	RBT-PAX-5
Neutrophil Elastase	RMab	RBT-PDGFRB
PAX-5	RMab	EP18
PDGFR-B	MMab	RBC2/3D5
PU.1	RMab	EP251
Spectrin	MMab	EP263
Spectrin	RMab	EP105
T-Bet/TBX-21	MMab	8A3
TCL1	RMab	EP266
TCR Beta F1	RMab	RBT-TdT
TdT	MMab	TIA-1
TdT	MMab	9C5
TIA-1	MMab	2F3.2
TRAcP	MMab	
Zap-70	MMab	

Liver

ANTIBODY	ANTIBODY TYPE	CLONE
Alpha-1-Antichymotrypsin	RPab	N/A
Alpha-1-Antitrypsin	RPab	N/A
Alpha-Fetaprotein	MMab	BSB-23
Alpha-Fetaprotein	RMab	EP209

Liver cont.

* BAP1	MMab	BSB-109
Beta-Catenin	MMab	14
Beta-Catenin	RMab	EP35
* Brachyury	RPab	Polyclonal
c-MET/HGFR	RMab	EP1454Y
CD10	MMab	56C6
CD10	RMab	EP195
CD13	MMab	38C12
CD13	RMab	EP117
CD25	MMab	4C9
CD25	RMab	RBT-CD25
CD34	MMab	QBEnd/10
CD34	RMab	EP88
CDK2	RMab	RBT-CDK2
CDX2	RMab	EP25
CEA	MMab	BSB-13
CEA	RPab	Polyclonal
Cytokeratin 8 & 18	MMab	B22.1/B23.1
Cytokeratin 8 & 18	RMab	EP17/EP30
Cytokeratin 19	MMab	BSB-34
Cytokeratin 19	RMab	EP72
Cytokeratin HMW 34BE12	MMab	34betaE12
Cytokeratin LMW CAM5.2	MMab	CAM5.2
EPCAM/Epithelial Specific Antigen	MMab	MOC-31
Glutamine Synthase	MMab	GS-6
Glypican-3	MMab	1G12
Hepatocyte Specific Antigen/ Hep Par 1	MMab	OCH1E5
HLA-DR alpha chain	RMab	EP96
P53	MMab	DO7
SI00A9	RMab	EP185
SALL4	MMab	6E3
SALL4	RMab	EP299
SMAD4/DPC4	MMab	BSB-63
* SMAD4/DPC4	RMab	RBT-SMAD4
SOX-9	RMab	EP317
Survivin	RMab	EP119
TTF-1	MMab	8G7G3/1
■ VEGF	RMab	RBT-VEGF

Lung

ANTIBODY	ANTIBODY TYPE	CLONE
ALK-1	RMab	EP302
ALK-1	RMab	RBT-ALK1
Bax	RMab	E63
bcl-2	MMab	BSB-5
bcl-2	RMab	EP36
BG8 Lewis Y	MMab	F3
■ BRAF V600E	RMab	RM8
Calretinin	RMab	EP1798
CA15-3	RMab	DF3
CD14	MMab	7
CD14	RMab	EP128
CD15	MMab	MMA
CD15	RMab	EP272
CD56	MMab	123C3.D5
CD74	MMab	LN2
CD105/Endoglin	RPab	Polyclonal
CD105	RMab	EP274
CDK2	RMab	RBT-CDK2
CDX2	RMab	EP25
CEA	MMab	BSB-13
CEA	RPab	Polyclonal
Chromogranin A	MMab	LK2H10
Claudin-5	RMab	EP224

Lung cont.

ANTIBODY	ANTIBODY TYPE	CLONE
Cyclin B1	RMab	RBT-B1
Cytokeratin 5	RMab	EP24
Cytokeratin 5 & 6	RMab	D5/16B4
Cytokeratin 5 & 6	RMab	EP24 & EP67
Cytokeratin 6	RMab	EP67
Cytokeratin 6 & CDKX2	RMab	EP16 & EP25
Cytokeratin 7	MMab	OV-TL 12/30
Cytokeratin 7	RMab	EP16
Cytokeratin 17	MMab	BSB-33
Cytokeratin 17	RMab	EP98
Cytokeratin 20	MMab	Ks20.8
Cytokeratin 20	RMab	EP23
Cytokeratin Cocktail AE1&AE3	MMab	AE1/AE3
Cytokeratin HMW/AE3	MMab	AE3
Cytokeratin LMW CAM5.2	MMab	CAM5.2
Cytokeratin LMW/AE1	MMab	AE1
Cytokeratin OSCAR	MMab	OSCAR
Desmoglein-3	MMab	BSB-61
Desmoglein-3	RMab	EP306
EGFR	MMab	31G7
EGFR Phospho	RMab	EP11
EMA	MMab	E29
EpCAM/Epithelial Specific Antigen	MMab	BerEP4
EPCAM/Epithelial Specific Antigen	MMab	MOC-31
ERCC1	RMab	EP219
GLUT1	RMab	EP141
HE4	RMab	EP370
HLA-DR alpha chain	RMab	EP96
1MP-3/1GF2BP3	RMab	EP286
Ki-67	RMab	EP5
Maspin	MMab	BSB-92
Mesothelial	MMab	HBME-1
Mesothelial	RMab	EP140
MUC4	MMab	8G7
MUC4	RMab	EP256
Napsin A	MMab	BSB-112
Napsin A	RMab	EP205
NSE	MMab	BSB-94
P40	RMab	ZR8
P63	RMab	EP174
PAX-6	RMab	EP341
PD-L1/CD274	RMab	RBT-PDL1
PGP 9.5	MMab	BSB-46
Podoplanin/d2-40	MMab	D2-40
S100A9	RMab	EP185
S100P	RMab	EP186
SOX-2	RMab	EP103
SOX-9	RMab	EP317
SOX-11	MMab	CL0142
STAT6	RMab	EP325
STAT6	RPab	Polyclonal
Synaptophysin	RPab	Polyclonal
Synaptophysin	RMab	EP158
TTF-1	MMab	8G7G3/1
WT-1	MMab	6F-H2

Lymphoma

ANTIBODY	ANTIBODY TYPE	CLONE
ALDH1A1	RMab	EP168
ALK-1	RMab	EP302

Lymphoma cont.

ALK-1	RMab	RBT-ALK1
bcl-2	MMab	BSB-5
bcl-2	RMab	EP36
bcl-6	MMab	BSB-26
* bcl-6	RMab	EP278
bcl-6	RMab	RBT-bcl6
bcl-10	MMab	BSB-22
BOB.1	RMab	EP114
BRAF V600E	RMab	RM8
c-Myc	MMab	9E10
c-Myc	RMab	EP121
CD1a	RMab	EP80
CD2	MMab	AB75
CD3 Epsilon	RMab	RBT-CD3e
CD3	RMab	RBT-CD3
CD4	RMab	RBT-CD4
CD5	RMab	RBT-CD5
CD5	RMab	RED1
CD6	MMab	BSB-54
CD7	MMab	LP15
CD7	RMab	EP132
CD8	MMab	C8/144B
CD8	RMab	EP334
CD10	MMab	56C6
CD10	RMab	EP195
CD14	MMab	7
CD14	RMab	EP128
CD15	MMab	MMA
CD15	RMab	EP272
* CD16	RMab	EP364
CD19	MMab	BSB-97
CD19	RMab	EP169
CD20	MMab	L26
CD21	RMab	EP64
CD23	MMab	1B12
CD23	RMab	EP75
CD25	MMab	4C9
CD25	RMab	RBT-CD25
CD30	MMab	Ber-H2
CD35	MMab	RLB25
CD35	RMab	EP197
CD38	MMab	SPC32
CD38	RMab	EP135
CD43	MMab	MT1
CD45	MMab	2B11 & PD7/26
CD45R	MMab	MB1
CD45RO	MMab	UCHL-1
CD56	MMab	123C3.D5
CD57	MMab	BSB-10
CD74	MMab	LN2
CD75	MMab	LN1
CD79a	MMab	LN1
CD99	MMab	JCB117
CD103/1TGAE	MMab	BSB-9
CD123, 1L-3RA	RMab	EP206
CD138	MMab	BSB-59
CD138	RMab	B-A38
CD138	MMab	EP201
CTLA-4/CD152	MMab	BSB-88
Cyclin D1	RMab	EP12
Cyclin D1	RMab	RBT14
E2F4	RMab	EP252
Epstein Barr Virus, LMP-1	MMab	CS1-4
Fascin	MMab	BSB-36
Follicular Dendritic Cell	MMab	CAN.42
FOXO1	RMab	EP290
FOXP1	RMab	EP137

Lymphoma cont.

FOXP3	RPab	Polyclonal
FOXP3	RMab	EP340
Granzyme B	RPab	Polyclonal
Granzyme B	RMab	EP230
hGAL.GCET2	RMab	EP316
HHV-8	MMab	13B10
Histone H3 Phospho	RPab	Polyclonal
Histone H3 Phospho	RMab	EP233
IgA	MMab	BSB-39
IgD	RPab	Polyclonal
IgD	RMab	EP173
IgG	MMab	BSB-40
Kappa Light Chains	MMab	BSB-58
Ki-67	RMab	EP5
* LAG-3	RMab	EP294
Lambda	MMab	BSB-16
* LEF-1	RMab	EP310
MUM-1	RMab	EP190
OCT-2	RMab	EP115
PAX-5	RMab	RBT-PAX-5
PD-1/CD279	MMab	NAT-105
PD-1/CD279	RMab	EP239
PD-L1/CD274	RMab	RBT-PDL1
PU.1	RMab	EP18
SOX-11	MMab	CL0142
T-Bet/TBX-21	RMab	EP263
TCL1	RMab	EP105
TCR Beta F1	MMab	8A3
TdT	RPab	N/A
TdT	RMab	EP266
TdT	RMab	RBT-TdT
TIA-1	MMab	TIA-1
TRAcP	MMab	9C5
Zap-70	MMab	2F3.2

Melanoma & Skin

ANTIBODY	ANTIBODY TYPE	CLONE
Adipophilin/ADRP	MMab	BSB91
* B7H3/CD276	RMab	RBT-B7H3
* BAP1	MMab	BSB-109
BRAF V600E	RMab	RM8
CD4	RMab	RBT-CD4
CD8	MMab	C8/144B
CD8	RMab	EP334
CD25	MMab	4C9
CD25	RMab	RBT-CD25
CD41/Integrin alpha IIb	RMab	EP178
CD63	MMab	NK1/C3
CD163	MMab	10D6
CD163	RMab	EP324
Cytokeratin 5 & 6	RMab	D5/16B4
Cytokeratin 5 & 6	RMab	EP24 & EP67
Cytokeratin 7	MMab	OV-TL 12/30
Cytokeratin 7	RMab	EP16
Cytokeratin 14	RMab	EP61
Cytokeratin 14	MMab	LL002
Cytokeratin 15	RMab	EP14
Cytokeratin 16	RMab	EP297
Cytokeratin HMW 34BE12	MMab	34betaE12
Cytokeratin HMW/AE3	MMab	AE3
Cytokeratin LMW/AE1	MMab	AE1
Cytokeratin OSCAR	MMab	OSCAR
Desmin	MMab	D33
Desmin	RMab	EP15

QUICK GUIDE REFERENCE

* NEW ANTIBODIES ■ ASR ■ RUQ

PLEASE NOTE:

All antibodies are IVD unless otherwise specified.

Melanoma & Skin cont.

Desmoglein-3	MMab	BSB-61
Desmoglein-3	RMab	EP306
EpCAM/Epithelial Specific Antigen	MMab	BerEP4
Factor XIIIa	RMab	EP292
Glypican-3	MMab	IG12
Granzyme B	RPab	Polyclonal
Granzyme B	RMab	EP230
Histone H3 Phospho	RPab	Polyclonal
Histone H3 Phospho	RMab	EP233
IMP-3/1GF2BP3	RMab	EP286
Ki-67	RMab	EP5
MART-1/Melan-A, M2-7C10	MMab	M2-7C10
MART-1/Melan-A, A103	MMab	A103
Melanoma/KBA.62	MMab	KBA.62
Melanoma/PNL2	MMab	PNL2
Melanoma Cocktail	MMab	HMB-45, A103 & BSB-6
Melanosome HMB-45	MMab	HMB-45
MiTF	MMab	C5/D5
MLH1	MMab	G168-728
MSH2	MMab	G219-1129
MSH2	RMab	RBT-MSH2
MSH6	MMab	44
MSH6	RMab	EP49
Nestin	RMab	EP287
NGFR	MMab	BSB-18
NRAS (Q61R)	RMab	RBT-NRAS
* OX40/CD134	MMab	BSB-90
P40	RMab	ZR8
P63	RMab	EP174
PD-L1/CD274	RMab	RBT-PDL1
PMS2	RMab	EP51
S100	MMab	4C4.9
S100 Beta	RMab	EP32
SOX-10	MMab	BSB-62
SOX-10	RMab	EP268
TIA-1	MMab	TIA-1
Tyrosinase	MMab	BSB-6
Vimentin	MMab	V9
Vimentin	RMab	EP21

Mesothelioma

ANTIBODY	ANTIBODY TYPE	CLONE
BG8 Lewis Y	MMab	F3
Calretinin	RMab	EP1798
* Caveolin 1	RMab	EP353
CEA	MMab	BSB-13
CEA	RPab	Polyclonal
Cytokeratin 5	RMab	EP24
Cytokeratin 5 & 6	RMab	D5/16B4
Cytokeratin 5 & 6	RMab	EP24 & EP67
Cytokeratin 7	MMab	OV-TL 12/30
Cytokeratin 7	RMab	EP16
E-Cadherin	RMab	EP6
EpCAM/Epithelial Specific Antigen	MMab	BerEP4
EPCAM/Epithelial Specific Antigen	MMab	MOC-31
GLUT1	RMab	EP141
* Mesothelial	MMab	HBME-1
Mesothelial	RMab	EP140
Podoplanin/d2-40	MMab	D2-40
TAG-72	MMab	BSB-21
Thrombomodulin/CD141	RMab	EP175
TTF-1	MMab	8G7G3/1

QUICK GUIDE REFERENCE

* NEW ANTIBODIES ■ ASR ■ RUQ

PLEASE NOTE:

All antibodies are IVD unless otherwise specified.

Neural & Neuroendocrine

ANTIBODY	ANTIBODY TYPE	CLONE
ACTH	MMab	BSB-25
* Alpha Synuclein	MMab	BSB-114
* Amyloid Beta	RMab	RBT-A4
* ATRX	MMab	BSB-108
* Brachyury	RPab	Polyclonal
c-MET/HGFR	RMab	EP1454Y
Calcitonin	RPab	N/A
Calcitonin	RMab	EP92
CD56	MMab	123C3.D5
CD57	MMab	BSB-10
Chromogranin A	MMab	LK2H10
Cytokeratin 18	RMab	EP30
FSH	MMab	BSB-55
Gastrin	RPab	N/A
GFAP	RMab	EP13
* GH	MMab	BSB-99
GH	RPab	N/A
GH	RMab	E267
* Glucagon	MMab	BSB-111
Glucagon	RPab	Polyclonal
Glucagon	RMab	EP74
Histone H3 Phospho	RPab	Polyclonal
Histone H3 Phospho	RMab	EP233
INI-1	MMab	25
Insulin	MMab	BSB-42
Insulin	RMab	EP125
* LEF-1	RMab	EP310
LH	MMab	BSB-16
Myelin Basic Protein	RPab	N/A
Myelin Basic Protein	RMab	EP207
NeuN	MMab	A60
Neuroblastoma	RMab	NB84a
Neurofilament	MMab	2F11
Neurofilament	RMab	EP79
NSE	MMab	BSB-94
OLIG2	RMab	EP112
Prolactin	MMab	PRL02
Prolactin	RMab	EP193
PTEN	MMab	6H2.1
PTEN	RMab	RBT-PTEN
* Somatostatin	MMab	BSB-113
Somatostatin	RPab	N/A
Somatostatin	RMab	EP130
Synaptophysin	RPab	Polyclonal
Synaptophysin	RMab	EP158
* Tau	MMab	BSB-115
TSH	MMab	BSB-56

New Antibodies

ANTIBODY	ANTIBODY TYPE	CLONE
Alpha Synuclein	MMab	BSB-114
Amyloid Beta	RMab	RBT-A4
ATRX	MMab	BSB-108
BAP1	MMab	BSB-109
bcl-6	MMab	BSB-26
Brachyury	RPab	Polyclonal
Caveolin 1	RMab	EP353
CD16	RMab	EP364
CD33	RMab	RBT-CD33
GATA 3	RMab	EP368

New Antibodies cont.

GH	MMab	BSB-99
Glucagon	MMab	BSB-111
HE4	RMab	EP370
Inhibin Alpha	RMab	EP378
LAG-3	RMab	EP294
Langerin/CD2-7	RMab	EP349
LEF-1	RMab	EP310
Mesothelial	MMab	HBME-1
Myoglobin	MMab	BSB-104
Napsin A	MMab	BSB-112
Parvalbumin	RMab	EP300
SMAD4/DPC4	RMab	RBT-SMAD4
Somatostatin	MMab	BSB-113
STAT6	RMab	EP325
Tau	MMab	BSB-115

Ovarian Cancer

ANTIBODY	ANTIBODY TYPE	CLONE
ALDH1A1	RMab	EP168
Bax	RMab	E63
CA-125	MMab	OC-125
CA-125	RMab	EP48
Cadherin 17/Li-Cadherin	RMab	EP86
Calretinin	RMab	EP1798
CD30	MMab	Ber-H2
CD99	MMab	BSB-9
CD103/ITGAE	RMab	EP206
CDX2	RMab	EP25
CEA	MMab	BSB-13
CEA	RPab	Polyclonal
Cytokeratin 7	MMab	OV-TL 12/30
Cytokeratin 7	RMab	EP16
Cytokeratin 17	MMab	BSB-33
Cytokeratin 17	RMab	EP98
Cytokeratin 20	MMab	Ks20.8
Cytokeratin 20	RMab	EP23
Cytokeratin 35BH11	MMab	35betaH11
EMA	MMab	E29
ERCC1	RMab	EP219
FOXP1	RMab	EP137
FOXP3	RPab	Polyclonal
FOXP3	RMab	EP340
FOXP3	RMab	1G12
Glypican-3	MMab	BSB-38
hCG	MMab	EP370
* HE4	RMab	EP96
HLA-DR alpha chain	RMab	EP241
hPL	RMab	EP241
hPL	RPab	Polyclonal
Inhibin Alpha	MMab	R1
* Inhibin Alpha	RMab	EP378
Ki-67	RMab	EP5
MUC4	MMab	8G7
MUC4	RMab	EP256
OCT-4	RMab	EPI43
PAX-2	RMab	EP235
PAX-6	RMab	EP341
PAX-8	RMab	EP298
PAX-8	RMab	ZR-1
PD-L1/CD274	RMab	RBT-PDL1
PLAP	MMab	BSB-47
PLAP	RMab	EP194
SALL4	MMab	6E3
SALL4	RMab	EP299
SOX-9	RMab	EP317

Ovarian Cancer cont.

Stathmin	RMab	EP247
Survivin	RMab	EPI19
WT-1	MMab	6F-H2

Pituitary

ANTIBODY	ANTIBODY TYPE	CLONE
ACTH	MMab	BSB-25
FSH	MMab	BSB-55
* GH	MMab	BSB-99
GH	RPab	N/A
GH	RMab	E267
LH	MMab	BSB-16
Prolactin	MMab	PRL02
Prolactin	RMab	EPI93
TSH	MMab	BSB-56
TSH	RMab	EP254

Prostate

ANTIBODY	ANTIBODY TYPE	CLONE
ALDH1A1	RMab	EP168
AMACR/acemase/P504S	RMab	13H4
Androgen Receptor	MMab	BSB-4 (AR-D12)
* B7H3/CD276	RMab	RBT-B7H3
bcl-2	MMab	BSB-5
bcl-2	RMab	EP36
c-Myc	MMab	9E10
c-Myc	RMab	EP121
CD6	MMab	BSB-54
CD105/Endoglin	RPab	Polyclonal
CD105	RMab	EP274
Cyclin D1	RMab	EP12
Cyclin D1	RMab	RBT14
Cytokeratin 5	RMab	EP24
Cytokeratin 5 & 6	RMab	D5/16B4
Cytokeratin 5 & 6	RMab	EP24 & EP67
Cytokeratin 5 & ERG	RMab	EP24/EP111
Cytokeratin 5 & 6 & ERG	RMab	EP24/EP67/EP111
Cytokeratin 5 & 14	RMab	EP24/EP61
Cytokeratin HMW 34BE12	MMab	34betaE12
ERG	RMab	EP1111
FOXA1/HNF-3A	RPab	Polyclonal
FOXA1/HNF-3A	RMab	EP277
FOXP3	RPab	Polyclonal
FOXP3	RMab	EP340
HSP-27	MMab	G3.1
Maspin	MMab	BSB-92
NKX3.1	RMab	EP356
Osteonectin/SPARC	MMab	BSB-93
P40	RMab	ZR8
P63	RMab	EP174
PDX1	RMab	EP139
Prostein/P501S	RMab	ZR-9
PSA	MMab	BSB-7
PSA	RMab	RBT-PSA
PSAP	MMab	PASE/ALJ
PSAP	RMab	EP53
PSMA	RMab	EP192
PSP94/MSMB	RMab	EP203
PTEN	MMab	6H2.1
PTEN	RMab	RBT-PTEN
S100P	RMab	EP186
SOX-9	RMab	EP317
Survivin	RMab	EP119

QUICK GUIDE REFERENCE

* NEW ANTIBODIES ■ ASR ■ RUO

PLEASE NOTE:

All antibodies are IVD unless otherwise specified.

Rejection & Autoimmunity

ANTIBODY	ANTIBODY TYPE	CLONE
Cytokeratin 16	RMab	EP297
Desmoglein-3	MMab	BSB-61
Desmoglein-3	RMab	EP306
Granzyme B	RPab	Polyclonal
Granzyme B	RMab	EP230
IgD	RMab	EP173
IgG	MMab	BSB-40
IgM	MMab	BSB-41
iNOS	RMab	RBT-iNOS
Kappa Light Chains	MMab	BSB-58
* LAG-3	RMab	EP294
Lambda	MMab	BSB-16
■ OX40/CD134	MMab	BSB-90
Perforin	MMab	5B10
S100A9	RMab	EP185

Sarcoma & Soft Tissue

ANTIBODY	ANTIBODY TYPE	CLONE
Actin, Muscle Specific	MMab	HHF35
Actin, Smooth Muscle	MMab	BSB-15
ALDH1A1	RMab	EP168
Caldesmon	MMab	BSB-19
Calponin	MMab	BSB-20
CA15-3	RMab	DF3
CD13	MMab	38C12
CD13	RMab	EP117
CD14	MMab	7
CD14	RMab	EP128
* CD33	RMab	RBT-CD33
CD34	MMab	QBEnd/10
CD34	RMab	EP88
CD35	MMab	RLB25
CD35	RMab	EP197
CD99	MMab	BSB-9
CD117	RMab	EP10
CD163	MMab	10D6
CD163	RMab	EP324
CDK4	RMab	EP180
Cytokeratin 5 & ERG	RMab	EP24/EP111
Cytokeratin Cocktail AE1&AE3	MMab	AE1/AE3
Cytokeratin OSCAR	MMab	OSCAR
Desmin	MMab	D33
Desmin	RMab	EP15
DOG1	RMab	EP332
DOG1	RMab	RBT-DOG1
Factor VIII-Related Antigen	RPab	N/A
Fli-1	MMab	G146-222
FOXO1	RMab	EP290
■ HHV-8	MMab	13B10
Histone H3 Phospho	RPab	Polyclonal
Histone H3 Phospho	RMab	EP233
* Langerin/CD2-7	RMab	EP349
MDM2	MMab	BSB-64
Melanoma/PNL2	MMab	PNL2
MUC4	MMab	8G7
MUC4	RMab	EP256
MyoD1	RMab	EP212
Myogenin	MMab	F5D
Myogenin	RMab	EP162
* Myoglobin	MMab	BSB-104

QUICK GUIDE REFERENCE

* NEW ANTIBODIES ■ ASR ■ RUO

PLEASE NOTE:

All antibodies are IVD unless otherwise specified.

QUICK GUIDE REFERENCE

* NEW ANTIBODIES ■ ASR ■ RUO

PLEASE NOTE:

All antibodies are IVD unless otherwise specified.